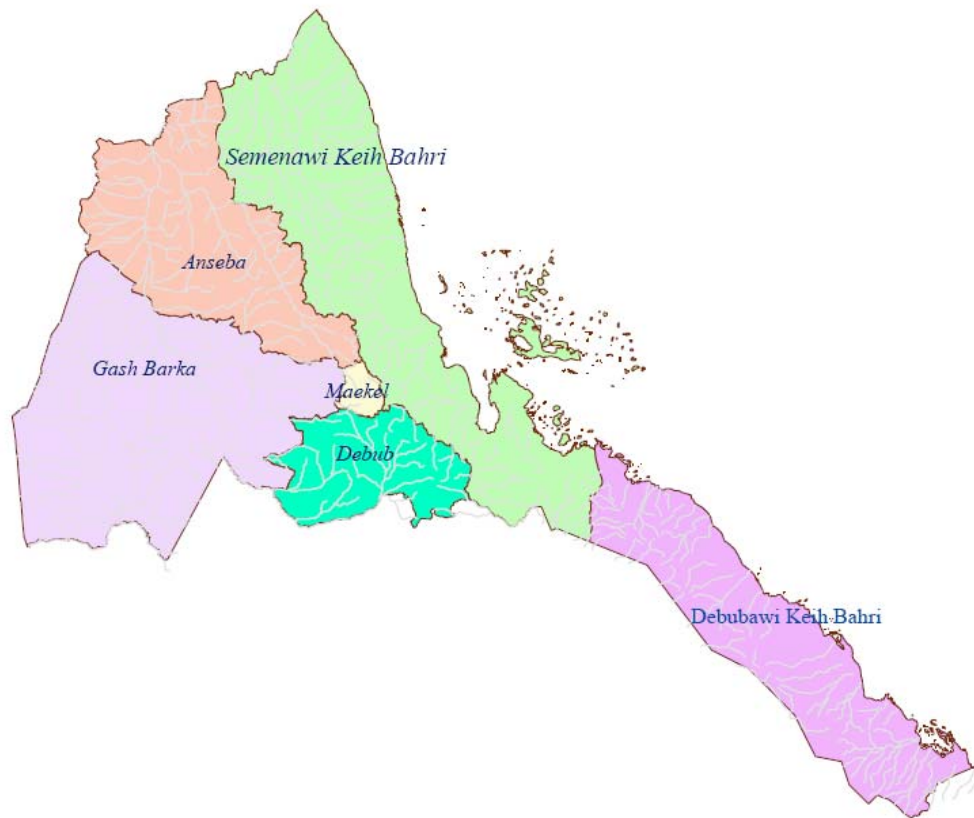


Eritrea: Essential Education Indicators 2009/10



**Ministry of Education
Asmara, Eritrea
December 2010**

ERITREA: Administrative zobas



Ministry of Education
Asmara, Eritrea
December 2010

Table of contents

Contents	Page
I. Introduction and executive summary.....	1
1. Introduction	1
2. Executive Summary	2
3. Data channels	3
II. Important notes.....	3
1. Population	3
2. Area of the country	3
3. School system	4
4. Gross dependency ratio	4
5. Definitions	4
III. Introductory information.....	5
IV. Pre-primary level.....	7
1. Pre-primary schools	7
2. Pre-primary enrolment	7
3. Pre-primary teachers	9
V. Elementary level.....	10
1. Background	10
2. Enrolment	10
3. Gross admission ratio	11
4. Net admission ratio	12
5. Over-age pupils in grade one	13
6. Under-age pupils in grade one	13
7. Children out of school	14
8. Gross enrolment ratio	15
9. Net enrolment ratio	16
10. Percentage of repeaters	17
11. Disparities among the zobas	17
VI. Middle level.....	18
1. Background	18
2. Enrolment	18
3. Gross enrolment ratio	19
4. Net enrolment ratio	21
5. Percentage of repeaters	22
VII. Secondary level.....	22
1. Background	22
2. Enrolment	22
3. Gross enrolment ratio	23
4. Net enrolment ratio	24
5. Percentage of repeaters	25
VII. Internal efficiency.....	26
1. Length of school year	26
2. All grades flow rate	26
3. Elementary level: Flow rate	27
4. Middle level: Flow rate	27
5. Secondary level: Flow rates	27
6. Elementary level: Zobas flow rates	28
7. Middle level: Zoba flow rate	29
8. Secondary level: Zoba flow rate	30
7. Elementary level: Cohort reconstruction – National and zobas	31

Content	Page
IX Teaching staff: Elementary, middle and secondary level	32
1. Pupil/teachers ratio: Elementary, middle and secondary level.....	32
2. Teachers' qualification.....	33
3. Female teachers.....	34
X Age-Specific Enrolment 2008/09.....	35

Charts and figures

Chart 1. Pre-primary: Enrolment by year and gender.....	8
Chart 2. Elementary level: Enrolment by zoba and gender.....	11
Chart 3. Elementary level: Gross and net admission ratio.....	12
Chart 4. Elementary level: Enrolment by year and gender.....	14
Chart 5. Elementary level: Gross enrolment ratio by year.....	15
Chart 6. Elementary level: Net enrolment ratio by year.....	16
Chart 7. Elementary level: Gross enrolment ratio by zoba	18
Chart 8. Middle level: Enrolment by zoba and gender.....	19
Chart 9. Middle level: Enrolment by year and gender.....	20
Chart 10. Secondary level: Enrolment by zoba and gender.....	23
Chart 11. Secondary level: Enrolment by year and gender.....	24
Chart 12. Secondary level: GER and NER by gender and year.....	25
Chart 13. Elementary level: Hypothetical cohort reconstruction (constant) – Eritrea.....	29
Chart 14. Elementary level: Average length of study per student (ALSS) by zoba.....	30
Chart 15. Percentage of wastage due to dropout and repetition by zoba.....	30

Tables

Table 1. Enrolment: level and gender by year, 1991/92-2009/10.....	5
Table 2. Teachers: level and gender by year, 1991/92-2009/10.....	6
Table 3. Enrolment and percentage distribution of non-gov schools by level and year	7
Table 4. Pre-primary level: Location and ownership by zoba, 2009/10.....	7
Table 5. Pre-primary level: Gross enrolment ratio by year, 1991/92-2009/10.....	8
Table 6. Pre-primary level: Net enrolment ratio by year, 2009/10.....	8
Table 7. Pre-primary level: Gender and teacher's training status by zoba, 2009/10.....	9
Table 8. Pre-primary level: Pupil/teacher ratio, 1991/92-2009/10.....	9
Table 9. Pre-primary level: Percentage of female teachers, 1991/92-2009/10	10
Table 10. Elementary level: Percentage of change by zoba and gender, 2009/10	10
Table 11. Elementary level: Gross admission ratio by year, 1991/92-2009/10.....	11
Table 12. Elementary level: Net admission ratio by year, 1991/92-2009/10.....	12
Table 13. Elementary level: Percentage of over-age pupils in grade one, 1991/92-2009/10.....	13
Table 14. Elementary level: Percentage of under-age pupils in grade one, 1991/92-2009/10.....	13
Table 15. Elementary level: Percentage of children out of school, 1991/92-2009/10.....	14
Table 16. Elementary level: Gross enrolment ratio by year, 1991/92-2009/10.....	15
Table 17. Elementary level: Net enrolment ratio by year, 1991/92-2009/10.....	16
Table 18. Elementary level: Percentage of repeaters by gender and year, 1991/92-2009/10.....	17
Table 19. Elementary level: Deviation from national GER by zoba, 2009/10.....	17
Table 20. Elementary level: Deviation from national NER by zoba, 2009/10.....	18
Table 21. Middle level: Percentage of change by zoba and gender, 2009/10.....	18
Table 22. Middle level: Gross enrolment ratio by year, 1991/92-2009/10.....	19
Table 23. Middle level: Deviation from national GER by zoba, 2009/10.....	20
Table 24. Middle level: Net enrolment ratio by year, 1991/92-2009/10.....	21
Table 25. Middle level: Deviation from national NER by zoba, 2009/10.....	21
Table 26. Middle level: Percentage of repeaters by year, 1991/92-2009/10.....	22
Table 27. Secondary level: Percentage of changes by zoba and gender, 2009/10.....	22
Table 28. Secondary level: Gross enrolment ratio by year, 1991/92-2009/10.....	23
Table 29. Secondary level: Deviation from national GER by zoba, 2009/10.....	23
Table 30. Secondary level: Net enrolment ratio by year, 1991/92-2009/10.....	24

Content	Page
Table 31. Secondary level: Deviation from national NER by zoba, 2009/10.....	24
Table 32. Secondary level: Percentage of repeaters by year, 1991/92-2009/10.....	25
Table 33. Elementary level: Duration of school year, 2009/10.....	26
Table 34. All grades: Flow rates by gender and grade 2009/10.....	26
Table 35. Elementary level: Flow rate by age and gender, 2009/10.....	27
Table 36. Middle level: Flow rate by age and gender, 2009/10.....	27
Table 37. Secondary level: Flow rate by age and gender, 2009/10.....	27
Table 38. Elementary level: Average flow rate 2009/10.....	28
Table 39. Middle level: Average flow rate, 2009/10.....	29
Table 40. Secondary level: Average flow rate, 2009/10.....	30
Table 41. Eritrea elementary level: Wastage, survival and transition ratios by Zoba.....	32
Table 42. Teachers: Gender and level by zoba, 2009/10.....	33
Table 43. Pupil/teacher ratio by year and level, 2009/10.....	33
Table 44. Teachers' qualifications, 2009/10.....	34
Table 45. Number and percentage of female teachers by level 1991/92-2009/10.....	34
Table 46. Age-specific enrolment 2009/10.....	35

I. Introduction and executive summary

1. Introduction

‘Eritrea: Essential Education Indicators is the official, annual education publication of the Ministry of Education (MoE) dealing with basic essential indicators. It is the 14th report produced by the Department of Research and Human Resource Development in terms of organization of schools in the six administrative zobas, the Zobas. The sources of information for this publication are annual school censuses carried out by Zoba education offices through standard questionnaires.

This publication covers data from Early Childhood Education (ECE) and General Education (Elementary, Middle and Secondary level). The main purpose of the 2009/10 publication is to provide useful, relevant, reliable and up-to-date information on education for various stakeholders within and outside the education sector.

The MoE believes that the data presented in this publication is by no means considered exhaustive. For further inclusion and refinement to be made, the Ministry of Education is working to improve the quality and coverage of the education statistics. Moreover, continuous efforts will be made to produce better and timely information.

This publication would not have been possible without the contribution of the six Zoba education offices and other educational institutions. The department remains deeply indebted to all for the efforts made to successfully finalize this publication.

The MoE truly appreciates UNICEF Eritrea Country Office for its support in financing the printing of these publications. Further appreciation is extended to all those who provided feedback and other relevant input.

Please feel free to give your serviceable feedback regarding the content and form of this education abstract so that department will be able to enrich this publication.

Department of Research and HRD
Ministry of Education
Asmara

December 2010

2. Executive summary

In the academic year 2009//10, enrolment in elementary level decreased by 4.7 percent and the decrease is observed all over the country except in Debubawi and Semienawi keih bahri. Enrolment in middle and secondary levels increased by 0.4 percent and 5.9 percent respectively as compared to previous academic year (2008/09). An increase in enrolment in middle level is observed in Anseba, Gash-Barka and Semienawi Keih Bahri where as an increase in enrolment in secondary level is observed in all zobas except in Debub.

Enrolment of girls in elementary level has generally decreased by 4.3 percent, particularly in government schools has showed a decrease of 3.5 percent as compared to the previous academic year, 2008/09.

As compared to the academic year 2008/09, the national enrolment of girls increased by 0.2 percent and that of boys decreased by 2.8 percent in 2009/10 academic year. The participation ratio of girls is still lower than that of boys except in literacy programmes, which is 91.17 percent. The gross enrolment ratios of females in pre-primary, elementary, middle and secondary levels were 20.6, 62.5, 44.4 and 19.6 percent respectively.

The number of students and teachers in pre-primary education has increased by 7.9 and 2.3 percent respectively and the number of schools in pre-primary has decreased by 1.1 percent. The number of schools by level in elementary, middle and secondary schools increased by 2.1, 6.5 and 7.5 percent respectively. The number of teachers in elementary level decreased by 3.2 percent and teachers in middle and secondary levels increased by 9.7 and 7.8 percent respectively.

The gross national accessibility to schooling in 2009/10 was about 21.0 percent, 66.1 percent, 48.5 percent and 23.4 percent in pre-primary, elementary, middle and secondary levels respectively.

The subsequent sections of this publication/abstract show the overall situation of the education system at all levels as well as some statistical information obtained since 1991.

3. Data channels

The information in this statistical abstract is gathered mainly from three questionnaires named number 7, 8 and 9. The first two questionnaires consist of closed questions/items, in which schools and institutions send back the *November data* on Pre-primary, Elementary, Middle, and Secondary schools to the MoE. The expected time of completion of these questionnaires is April. In every academic year normally 100% of the questionnaires are collected.

Item questionnaire 9 cover a school's physical, financial and internal efficiency particulars. The expected time of completion of this Questionnaire is July, which is after the end of each academic year.

The Department assure users of this abstract that all necessary measures have been taken to make the information provided in this issue valuable and reliable.

Data in all tables, unless otherwise stated, refer to the academic year 2009/10. Table numbers are sub-grouped under corresponding sections. Charts are sequenced in a continuous ascending order throughout the abstract.

II. Important notes

1. Population

- 1.1 For the purpose of this issue, the mid-variant of the 2009 population estimate 3,984,162 is used to derive essential educational indicators; it is also used in splitting the population into single age population.

We would like to remind users of our yearly abstracts that we have been using different population estimation in our previous publications. We have used the new population estimation, which is considered to be a better estimation, as a base to calculate school-age population and thus enrolment and other essential indicators as well.

- 1.2. Average **population density**: 31/sq.km.

- 1.3. Total **school-age population** by school level (estimated percentage of the total population for the year 2009).

Age group	Population	Estimated % of total population
5-6	193,171	4.8
7-11	432,867	10.9
12-14	312,495	7.8
15-18	406,785	10.2

2. **Area of the country**: approximately **124,000 sq. km.**

3. School system

Level	Grade	Age
Pre-school	I, II	5-6
Elementary	1-5	7-11
Middle	6-8	12-14
Secondary	9-12	15-18

4. Gross Dependency Ratio defined as percentage of the sum of all persons under 15 years and over 64 years divided by the number of persons age 15-64.

Age-group	Population	Dependency ratio	
0-5 years	778,608	35.9	Young dependency ratio
6-14 years	838,117	38.6	Young dependency ratio
65 years and above	198,653	9.2	Old dependency ratio

Total dependants (estimate)	1,815,378
Total non-dependants (estimate)	2,168,784
Gross Dependency Ratio	83.7

5. Definitions

5.1 Government schools are schools administered and financed by the Ministry of Education.

5.2 Non-government schools are schools administered and financed by institutions other than the Ministry of Education.

• **Types of Non government (Non-gov) schools are:-**

5.2.1. Community schools are schools administered by municipalities or local or foreign communities

5.2.2. Awkaf (Mahad) schools are schools administered by Awkaf (Islamic religion association).

5.2.3. Mission schools are schools administered by churches (Coptic, Catholic, and Protestant churches).

5.3 Special schools are schools for the deaf and the blind. There are two schools for the deaf, one in Keren and another in Asmara and one school for the blind in Asmara.

5.4 Number of schools by level:

A school having grades 1-12 is considered as three (1-5, 6-8, 9-12) schools by **level** regardless of being single **site**; schools having grades 1-8 are considered as two schools as it contains two levels (1-5 and 6-8) and the same for schools having grades 6-12.

5.5. Number of schools by site:

One single school compound or **site** may accommodate a combination of two or three level of schools but may be counted as one school **for purposes of specific location**. The number of schools by level is usually greater than the number of schools by site.

III. Introductory information

Tables 1 and 2 give the number of students and teachers of General Education, Asmara Teachers Education Institute (ATEI) and Technical and vocational schools (Tech. and voc.) since 1991/92.

Table 1: Enrolment: Level and gender by year 1991/92-2009/10

Year	Level						Post secondary			
	Elementary		Middle		Secondary		ATEI		Tech. and voc.	
	F	T	F	T	F	T	F	T	F	T
1991/92	69,324	150,870	13,765	27,917	13,183	27,627	290	1,268	61	480
1992/93	82,356	184,492	13,375	28,427	14,390	31,531	720	2,580	58	537
1993/94	92,536	208,199	14,652	32,781	13,324	32,756	54	398	60	589
1994/95	99,743	224,287	15,685	34,995	14,631	36,728	674	2,185	53	546
1995/96	108,254	241,725	18,103	39,751	15,475	39,151	9	93	59	536
1996/97	108,487	240,737	20,721	47,460	16,332	40,594	52	359	71	546
1997/98	111,930	247,499	24,154	57,152	16,417	41,615	87	478	69	406
1998/99	118,385	261,963	29,290	67,021	17,756	47,533	73	471	140	908
1999/00	133,045	295,941	33,284	74,317	22,093	59,626	129	606	147	1,018
2000/01	134,168	298,691	35,107	76,564	23,596	63,951	197	961	464	1,866
2001/02	146,218	330,278	34,667	80,882	25,054	70,183	169	1,022	393	1,992
2002/03	159,563	359,423	36,881	87,019	26,185	72,818	61	874	429	1,965
2003/04	165,954	374,997	49,224	122,966	22,952	69,401	474	474	531	1,917
2004/05	167,451	377,512	53,996	139,029	26,041	76,051	365	492	675	1,152
2005/06	161,875	364,263	57,448	148,082	27,293	77,644	N.A	N.A	881	2,060
2006/07	149,755	331,855	59,342	141,081	30,329	75,800	102	646	685	1,488
2007/08	140,792	314,034	60,265	144,031	34,088	83,411	177	630	2,581	6,094
2008/09	135,018	300,129	64,114	151,131	35,764	89,761	202	630	2,203	4,620
2009/10	129,218	286,021	66,930	151,702	39,306	95,076	160	563	1,690	4,012

N.B this enrolment table includes students enrolled in regular/formal schools only

* ATEI stands for Asmara Teachers Education Institute

** Tech. and voc. Stands for Technical and Vocational

Table 2: Teachers: Level and gender by year 1991/92-2009/10

Year	Elementary		Middle		Secondary		ATEI		Tech. and voc	
	F	T	F	T	F	T	F	T	F	T
1991/92	1,411	3,647	139	783	67	758	3	31	5	67
1992/93	1,841	4,954	143	854	93	905	6	87	4	75
1993/94	1,865	5,272	140	978	104	1,015	3	34	0	63
1994/95	1,974	5,583	139	948	108	1,081	3	44	2	74
1995/96	2,025	5,828	156	992	103	1,039	2	32	6	80
1996/97	1,977	5,476	170	1,017	106	942	6	33	1	79
1997/98	1,893	5,799	170	1,162	113	959	4	38	0	66
1998/99	1,951	5,576	149	1,208	112	982	3	38	4	101
1999/00	2,330	6,229	167	1,312	109	1,047	2	32	9	104
2000/01	2,710	6,668	160	1,377	115	1,188	11	37	9	173
2001/02	2,873	7,498	177	1,529	145	1,419	6	47	17	174
2002/03	2,756	7,692	178	1,614	140	1,277	5	46	69	265
2003/04	2,887	8,033	216	2,241	215	1,645	11	23	78	326
2004/05	3,166	7,942	245	2,449	215	1,609	4	25	16	169
2005/06	3,296	7,711	257	2,491	188	1,552	0	0	15	145
2006/07	3,305	6,933	245	2,478	208	1,778	12	41	10	169
2007/08	3,241	7,311	258	2,704	210	1,811	10	39	39	376
2008/09	3,144	7,802	331	3,352	267	2,292	10	41	39	389
2009/10	3,080	7,536	485	3,680	314	2,472	10	48	42	429

N.B In elementary and middle levels only directors are included in teaching staff where as in secondary level directors and other staffs those who are actively participated in teaching and learning process are included Such as peda. Head, unit leader...etc.

Table 3. Enrolment and Percentage distribution of Non-gov. schools by level and year

Year	1-5			6-7			8-11		
	Non-gov.	T	%	Non-gov.	T	%	Non-gov.	T	%
1991/92	33,377	150,870	22.1	4,788	27,917	17.2	794	27,627	2.9
1992/93	31,513	184,492	17.1	5,174	28,427	18.2	1,740	31,531	5.5
1993/94	31,766	208,199	15.3	5,203	32,781	15.9	1,984	32,756	6.1
1994/95	30,398	224,287	13.6	4,992	34,995	14.3	2,530	36,728	6.9
1995/96	30,650	241,725	12.7	5,385	39,751	13.5	3,514	39,151	9.0
1996/97	29,578	240,737	12.3	5,841	47,460	12.3	3,313	40,594	8.2
1997/98	27,292	247,499	11.0	5,401	57,152	9.5	2,634	41,615	6.3
1998/99	29,153	261,963	11.1	5,417	67,021	8.1	2,094	47,533	4.4
1999/00	29,766	295,941	10.1	5,155	74,317	6.9	2,292	59,626	3.8
2000/01	27,860	298,691	9.3	5,598	76,564	7.3	2,591	63,951	4.1
2001/02	27,269	330,278	8.3	5,758	80,882	7.1	2,672	70,183	3.8
2002/03	28,570	359,423	7.9	6,201	87,019	7.1	2,761	72,818	3.8
	1-5			6-8			9-12		
2003/04	29,134	374,997	7.8	8,933	122,966	7.3	2,630	69,401	3.8
2004/05	29,862	377,512	7.9	9,422	139,029	6.8	2,701	76,051	3.6
2005/06	29,728	364,263	6.6	9,458	148,082	4.1	2,401	77,644	3.1
2006/07	29,070	331,855	8.8	9,492	141,081	6.7	1,497	75,800	2.0
2007/08	28,482	314,034	9.1	10,460	144,031	7.3	2,351	83,411	2.8
2008/09	26,979	300,129	9.0	10,155	151,131	6.7	2,425	89,761	2.7
2009/10	22,543	286,021	7.9	6,034	151,702	4.0	2,611	95,076	2.7

IV. Pre-primary level

1. Pre-primary schools

In the academic year 2009/10, there were 470 pre-primary schools in the whole country. 139 (29.6%) of them are located in Zoba Debub. Out of which 110 (79.1%) are located in rural area of the region.

In the academic year 2009/10, 305 (64.89%) out of the 470 schools were government owned, while the rest of the schools, 165 (35.1%) were non-government owned.

Table 4. Pre-primary level: Location and ownership by zoba, 2009/10

Zoba	Ownership												
	Total			Government		Mission		Awkaf		Private		Community	
	Tot	Urb	Rur	Urb	Rur	Urb	Rur	Urb	Rur	Urb	Rur	Urb	Rur
Anseba	76	14	62	9	55	3	5	0	0	0	0	2	2
Debub	139	29	110	13	69	8	12	0	0	1	2	7	27
Deb-Keih-B.	19	4	15	4	14	0	1	0	0	0	0	0	0
Gash Barka	65	31	34	26	34	2		0	0	0	0	3	0
Maekel	133	63	70	6	43	11	5	0	0	17	7	29	15
Sem-Keih-B.	38	14	24	9	23	5	1	0	0	0	0	0	0
Total	470	155	315	67	238	29	6	0	0	18	9	41	44

N.B. Urb = Urban Rur = Rural

2. Pre-primary enrolment

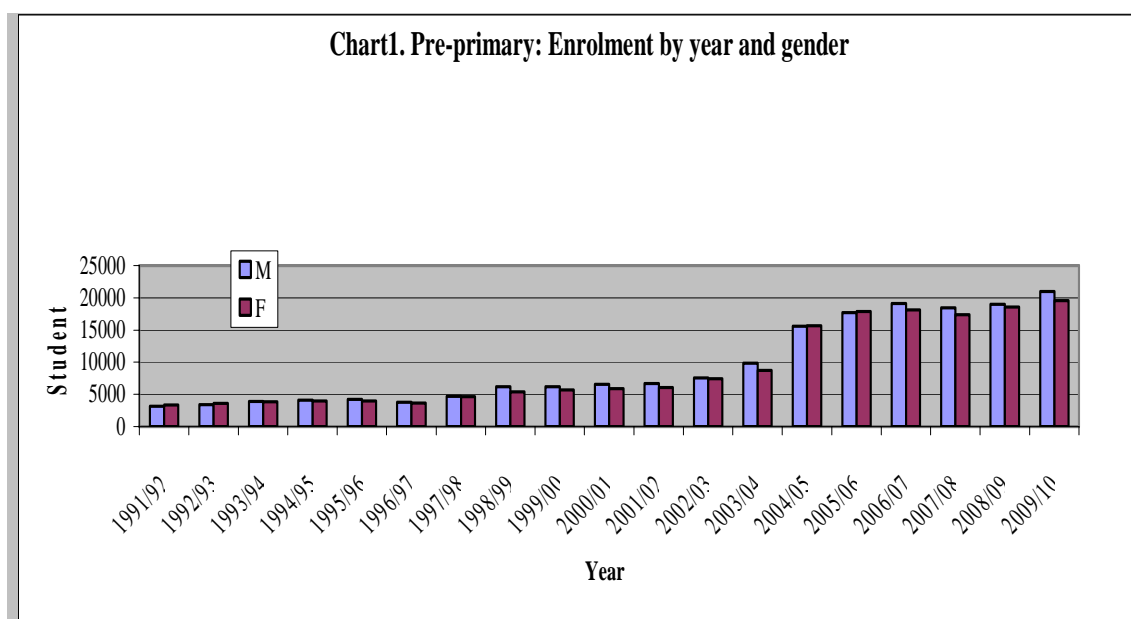
Children of ages 5 and 6 are supposed to be enrolled in pre-primary schools. The gross enrolment ratio was very low and is decreasing as compared to the previous academic years. While the net enrolment ratio has been increasing since 2002/03 and started to decline since 2007/08

Table 5. Pre-primary level: Gross enrolment ratio by year, 1991/92-2009/10

Year	Population age-group 5-6			Enrolment in pre-primary			Gross enrolment ratio		
	T	M	F	T	M	F	T	M	F
1991/92	151,758	80,047	71,711	6,461	3,142	3,319	4.3	3.9	4.6
1992/93	157,155	83,071	74,084	7,031	3,426	3,605	4.5	4.1	4.9
1993/94	162,451	85,871	76,580	7,748	3,909	3,839	4.8	4.6	5.0
1994/95	167,681	88,493	79,188	8,032	4,102	3,930	4.79	4.6	5.0
1995/96	172,869	90,974	81,895	8,180	4,201	3,979	4.7	4.6	4.9
1996/97	178,026	93,344	84,682	7,443	3,791	3,652	4.2	4.1	4.3
1997/98	182,438	95,262	87,176	9,300	4,683	4,617	5.1	4.9	5.3
1998/99	193,506	100,775	92,731	11,581	6,168	5,413	6.0	6.1	5.8
1999/00	194,782	101,380	93,402	11,885	6,181	5,704	6.1	6.1	6.1
2000/01	201,401	104,926	96,475	12,436	6,540	5,896	6.2	6.2	6.1
2001/02	208,703	108,972	99,731	12,747	6,704	6,043	6.1	6.2	5.6
2002/03	211,624	110,141	101,483	14,958	7,563	7,395	7.1	6.9	7.3
2003/04	203,602	106,339	97,263	18,540	9,821	8,719	9.1	9.2	9.0
2004/05	191,368	91,216	100,152	31,244	15,565	15,679	16.3	17.1	15.7
2005/06	178,548	93,457	85,091	35,569	17,672	17,897	19.9	18.9	21.0
2006/07	169,078	88,291	80,787	37,263	19,147	18,116	22.0	21.7	22.4
2007/08	168,324	87,437	80,887	35,833	18,442	17,391	21.3	21.1	21.5
2008/09	177,116	91,168	85,948	37,565	19,026	18,539	21.2	20.9	21.6
2009/10	193,171	98,326	94,845	40,506	19,525	19,544	21.0	21.3	20.6

Table 6. Pre-primary: Net enrolment ratio by year, 1999/2000-2009/10

Year	Population age-group 5-6			Net enrolment in pre-primary			Net enrolment ratio		
	T	M	F	T	M	F	T	M	F
1999/00	194,782	101,380	93,402	9,471	4,907	4,564	4.9	4.8	4.9
2000/01	201,401	104,926	96,475	8,898	4,684	4,214	4.4	4.5	4.4
2001/02	208,703	108,972	99,731	9,160	4,828	4,332	4.4	4.4	4.3
2002/03	211,624	110,141	101,483	10,605	5,266	5,339	5.0	4.9	5.3
2003/04	203,602	106,339	97,263	13,189	6,826	6,363	6.5	6.4	6.5
2004/05	191,368	91,216	100,152	22,167	11,098	11,069	11.6	12.2	11.1
2005/06	178,548	93,457	85,091	25,052	12,294	12,758	14.0	13.2	15.0
2006/07	169,078	88,291	80,787	24,993	12,864	12,129	14.9	14.6	15.0
2007/08	168,324	87,437	80,887	24,597	12,686	11,911	14.6	14.5	14.7
2008/09	177,116	91,168	85,948	16,134	8,218	7,916	9.1	9.0	9.2
2009/10	193,171	98,326	94,845	27,163	14,071	13,092	14.1	14.3	13.8

Chart1. Pre-primary: Enrolment by year and gender

3. Pre-primary teachers

During the academic year 2009/10, there were 1,143 pre-primary teachers in the whole country of whom 644 (56.3%) have professional training. And 476 female and 12 male teachers were without any professional training.

As table 7 indicates almost all (1,119 or 97.9%) teachers in pre-primary schools are female. The percentage of male teachers is fluctuating between 0 and 4 percent from 1991/92 up to the current academic year.

Table 7. Pre-primary level: Gender and teacher's training status by zoba, 2009/10

Zoba	Total		Trained		Not trained	
	T	F	T	F	T	F
Anseba	142	136	77	74	65	62
Debub	271	267	149	149	118	118
Deb-Keih-B	31	28	9	8	22	20
Gash-Barka	114	111	88	86	25	25
Maekel	516	508	280	276	236	232
Sem-Keih-B	69	69	47	47	22	22
Total	1143	1119	650	640	488	479

N.B stands for not available

Table 8. Pre-primary level: Pupil/teacher ratio, 1991/92-2009/10

Year	Enrolment			Teachers			Pupil/teacher ratio
	T	M	F	T	M	F	
1991/92	6,461	3,142	3,319	201	0	201	32
1992/93	7,031	3,426	3,605	227	0	227	31
1993/94	7,748	3,909	3,839	244	1	243	32
1994/95	8,032	4,102	3,930	256	1	255	31
1995/96	8,180	4,201	3,979	235	3	232	35
1996/97	7,443	3,791	3,652	207	3	204	36
1997/98	9,300	4,683	4,617	239	3	236	39
1998/99	11,581	6,168	5,413	321	9	312	36
1999/00	11,885	6,181	5,704	320	6	314	37
2000/01	12,436	6,540	5,896	326	8	318	38
2001/02	12,747	6,704	6,043	353	6	347	37
2002/03	14,958	7,563	7,395	410	19	391	37
2003/04	18,540	9,821	8,719	492	21	471	38
2004/05	31,244	15,565	15,679	845	29	816	37
2005/06	35,569	17,672	17,897	1,030	39	991	35
2006/07	37,263	19,147	18,116	1,067	33	1,034	35
2007/08	35,833	17,391	18,442	1,062	37	1,025	34
2008/09	37,565	19,026	18,539	1,117	32	1,085	34
2009/10	40,506	20,981	19,525	1,143	24	1,119	36

In pr-primary level directors are included in teaching staff .

Table 9. Pre-primary: Percentage of female teachers, 1991/92-2009/10

Year	Teachers			Percentage of female teachers
	T	M	F	
1991/92	201	0	201	100.0
1992/93	227	0	227	100.0
1993/94	244	1	243	99.6
1994/95	256	1	255	99.6
1995/96	235	3	232	98.7
1996/97	207	3	204	98.6
1997/98	239	3	236	98.7
1998/99	321	9	312	97.2
1999/00	320	6	314	98.1
2000/01	326	8	318	97.5
2001/02	353	6	347	98.3
2002/03	413	19	394	95.4
2003/04	492	21	471	95.7
2004/05	845	29	816	96.6
2005/06	1,030	39	991	96.2
2006/07	1,067	33	1,034	96.9
2007/08	1,062	37	1,025	96.5
2008/09	1,117	32	1,085	97.1
2009/10	1,143	24	1,119	97.9

V. Elementary level

1. Background

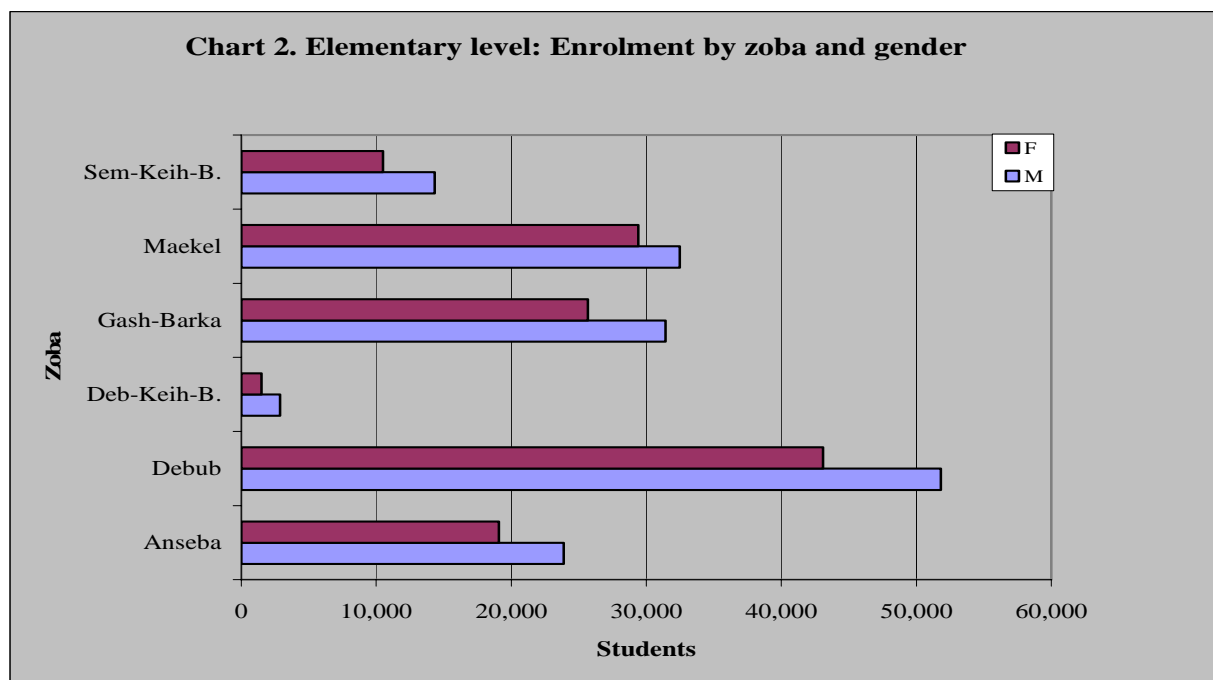
The official school age for elementary level is 7-11 and the duration of stay is 5 years. Education in government schools is free of charge and compulsory. At this level, language of instruction is mother tongue.

2. Enrolment

Enrolment in this level for the academic year 2009/10 is 286,021 out of which 129,218 (45.2%) were females. Out of the total enrolment in elementary school, 22,543 (7.9%) were enrolled in non-government schools.

Table 10. Elementary level: Percentage of change by zoba, gender, 2008/09-2009/10

Zoba	2008/09			2009/10			Percentage of change		
	T	M	F	T	M	F	T	M	F
Anseba	45,950	25,818	20,132	42,975	23,887	19,088	-6.5	-7.5	-5.2
Debub	103,306	56,278	47,028	94,898	51,824	43,074	-8.1	-7.9	-8.4
Deb-Keih-B.	4,278	2,869	1,409	4,389	2,879	1,510	2.6	0.3	7.2
Gash-Barka	59,169	32,765	26,404	57,090	31,419	25,671	-3.5	-4.1	-2.8
Makel	62,826	32,983	29,843	61,876	32,481	29,395	-1.5	-1.5	-1.5
Sem-Keih-B.	24,600	14,398	10,202	24,793	14,313	10,480	0.8	-0.59	2.7
Total	300,129	165,111	135,018	286,021	156,803	129,218	-4.7	-5.0	-4.3



3. Gross admission ratio

Table 11. Elementary level: Gross admission ratio by year, 1991/92-2009/10

Year	Population of age 7			Admission in grade one			Gross admission ratio		
	T	M	F	T	M	F	T	M	F
1991/92	76,409	40,250	36,159	46,671	25,807	20,864	61.1	64.1	57.7
1992/93	79,125	41,770	37,355	46,210	26,612	19,598	58.4	63.7	52.5
1993/94	81,793	43,179	38,614	45,656	25,432	20,224	55.8	58.9	52.4
1994/95	84,426	44,497	39,929	44,285	24,159	20,126	52.5	54.3	50.4
1995/96	87,038	45,745	41,293	46,497	26,108	20,389	53.4	57.1	49.4
1996/97	89,635	46,937	42,698	41,122	22,578	18,544	45.9	48.1	43.4
1997/98	91,857	47,901	43,956	50,471	28,407	22,064	55.0	59.3	50.2
1998/99	97,430	50,673	46,757	57,336	31,758	25,578	58.9	62.7	54.7
1999/00	98,147	50,689	47,458	68,902	38,345	30,557	70.2	75.7	64.4
2000/01	101,482	52,462	49,020	72,139	39,595	32,544	71.1	75.5	66.4
2001/02	105,158	54,484	50,674	74,899	41,114	33,785	71.2	75.5	66.7
2002/03	106,633	55,069	51,564	76,145	41,767	34,378	71.4	75.8	66.7
2003/04	103,616	52,494	51,122	68,983	38,059	30,924	66.6	72.5	60.5
2004/05	102,181	53,250	48,931	69,166	37,633	31,533	67.7	70.7	64.4
2005/06	96,020	50,169	45,851	60,922	32,985	27,937	63.5	65.8	60.9
2006/07	89,660	46,895	42,765	52,983	28,546	24,437	59.1	60.1	57.1
2007/08	84,740	44,270	40,470	51,784	28,326	23,458	61.1	64.0	58.0
2008/09	83,672	43,569	40,103	56,220	30,452	25,768	67.2	69.9	64.3
2009/10	87,455	45,126	42,329	59,097	31,213	27,884	67.6	69.2	65.9

As can be seen in Table 11, the gross admission ratio has been steadily decreasing from 61.1% to 45.9% between the academic year 1991/92 and 1996/97 (except for the academic year 1995/96). Then it started to progressively increase from 45.9% to 71.4% between the academic year 1996/97 and 2002/03. then after it has decreased from 66.6% to 61.1% between the academic year 2003/04 and 2007/08 except in the academic year 2004/05. In 2009/10 academic year gross admission ratio has shown small increment from the previous scholastic year.

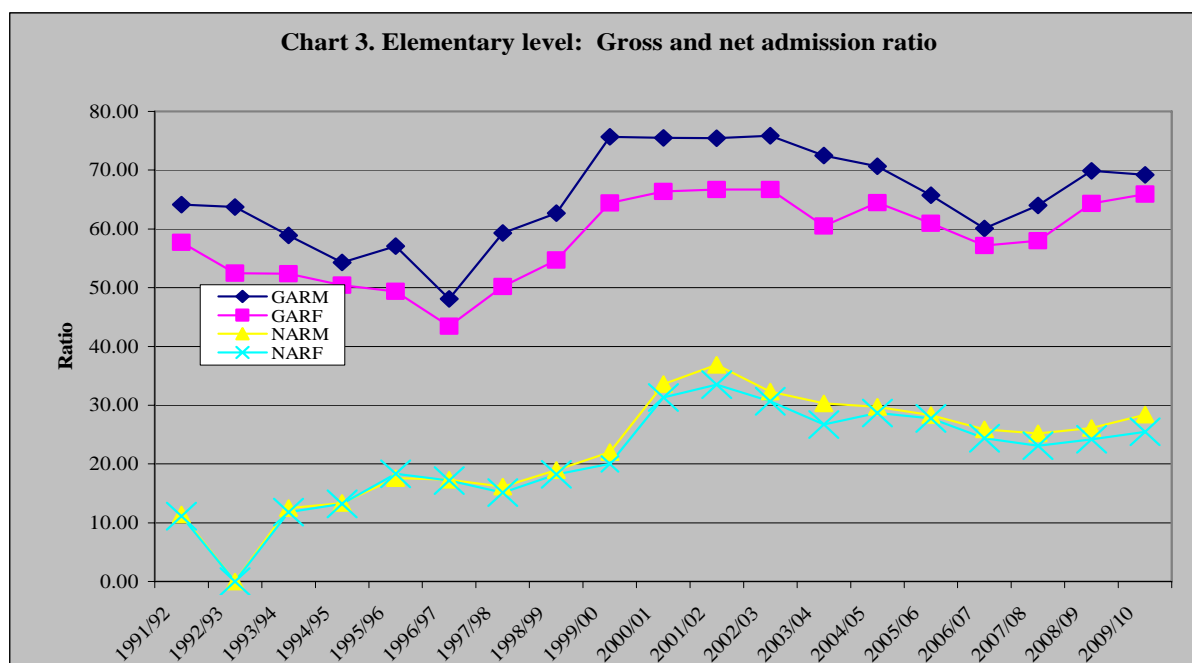
4. Net admission ratio

Table 12. Elementary level: Net admission ratio by year, 1991/92-2009/10

Year	Population of age 7			Admission of age 7			Net admission ratio		
	T	M	F	T	M	F	T	M	F
1991/92	76,409	40,250	36,159	8,605	4,580	4,025	11.3	11.4	11.1
1992/93	79,125	41,770	37,355	N.A	NA	NA	N.A	N.A	N.A
1993/94	81,793	43,179	38,614	9,947	5,392	4,555	12.2	12.5	11.8
1994/95	84,426	44,497	39,929	11,227	5,949	5,278	13.3	13.4	13.2
1995/96	87,038	45,745	41,293	15,612	8,053	7,559	17.9	17.6	18.3
1996/97	89,635	46,937	42,698	15,469	8,132	7,337	17.3	17.3	17.2
1997/98	91,857	47,901	43,956	14,370	7,723	6,647	15.6	16.1	15.1
1998/99	97,430	50,673	46,757	18,140	9,608	8,532	18.6	19.0	18.3
1999/00	98,147	50,689	47,458	20,674	11,169	9,505	21.1	22.0	20.0
2000/01	101,482	52,462	49,020	32,977	17,632	15,345	32.5	33.6	31.3
2001/02	105,158	54,484	50,674	37,071	20,094	16,977	35.3	36.9	33.5
2002/03	106,633	55,069	51,564	33,199	17,810	15,389	31.1	32.3	30.7
2003/04	103,616	52,494	51,122	29,568	15,906	13,662	28.5	30.3	26.7
2004/05	102,181	53,250	48,931	29,866	15,833	14,033	29.2	29.7	28.7
2005/06	96,020	50,169	45,851	26,923	14,203	12,720	28.0	28.3	27.7
2006/07	89,660	46,895	42,765	22,577	12,145	10,432	25.2	25.9	24.4
2007/08	84,740	44,270	40,470	20,502	11,157	9,345	24.2	25.2	23.1
2008/09	83,672	43,569	40,103	21,071	11,385	9,686	25.2	26.1	24.2
2009/10	87,455	45,126	42,329	23,627	12,836	10,791	27.0	28.4	25.5

N.B NAR for 2004/05 was mistakenly reported with new entrants 47,429(T), 25,008(M), and 22,421(F) and is corrected by 29,866(T), 15,833(M) and 14,033(F) in the following editions.

As can be seen from table 12, the net admission ratio has increased yearly between the successive academic years of 1991/92-2001/02 except in the academic year 1997/98, and it has decreased yearly between the successive academic years of 2002/03-2007/08 except in the academic year 2004/05. In the academic year 2009/10 net admission has increased by 1.8% from the previous academic year.



5. Over-aged pupils in grade one.

Table 13. Elementary level: Percentage of over-age pupils in grade one, 1991/92-2009/10

Year	Enrolment in grade 1			Over-age enrolment in Grade 1			% of over-age in grade 1		
	T	M	F	T	M	F	T	M	F
1991/92	67,550	36,867	30,683	52,427	28,919	23,508	77.6	78.4	76.6
1992/93	68,770	38,291	30,479	N.A	NA	NA	NA	NA	NA
1993/94	64,527	35,101	29,426	48,963	26,886	22,075	75.9	76.6	75.0
1994/95	62,914	33,793	29,121	46,192	25,043	21,147	73.4	74.1	72.6
1995/96	65,110	34,869	30,241	47,320	25,600	21,718	72.7	73.4	71.8
1996/97	58,841	31,820	27,021	40,404	22,032	18,372	68.7	69.2	68.0
1997/98	68,388	38,104	30,284	48,649	27,496	21,153	71.1	72.2	69.8
1998/99	75,340	41,586	33,754	50,409	28,365	22,044	66.9	68.2	65.3
1999/00	91,037	50,459	40,576	59,351	33,493	25,858	65.2	66.4	63.7
2000/01	88,045	47,907	40,138	45,357	25,146	20,211	51.5	52.5	50.4
2001/02	97,678	53,409	44,269	48,885	27,137	21,748	50.0	50.9	49.1
2002/03	101,496	55,186	46,310	53,456	28,270	25,186	52.7	51.2	54.4
2003/04	99,216	54,309	44,907	46,542	26,229	20,313	46.9	48.3	45.2
2004/05	89,524	48,902	40,622	36,585	20,831	15,754	40.9	42.6	38.8
2005/06	73,222	39,781	33,441	27,184	15,534	11,650	37.1	39.1	34.8
2006/07	62,486	33,732	28,754	36,729	19,783	16,946	58.8	58.6	58.9
2007/08	60,940	33,506	27,434	16,086	9,275	6,811	26.4	27.7	24.8
2008/09	64,665	35,217	29,448	15,837	9,157	6,680	24.5	26.0	22.7
2009/10	69,624	37,899	31,725	16,435	9,397	7,038	23.6	24.8	22.2

Table 13 indicates that the efforts made to expand access has significantly contributed to lower % of overaged enrolment in grade one to its minimal value.

6. Under-aged pupils in grade one.

Table 14. Elementary level: Percentage of under-age pupils in grade one, 1991/92-2009/10

Year	Enrolment in Grade 1			Under-age enrolment grade1			Percentage of under-age		
	T	M	F	T	M	F	T	M	F
1991/92	67,550	36,867	30,683	2,661	1,405	1,256	3.9	3.8	4.1
1992/93	68,770	38,291	30,479	1,906	962	944	2.8	2.5	3.1
1993/94	64,527	35,101	29,426	1,527	778	749	2.3	2.2	2.5
1994/95	62,914	33,793	29,121	865	447	418	1.4	1.3	1.4
1995/96	65,110	34,869	30,241	880	445	435	1.4	1.3	1.4
1996/97	58,841	31,820	27,021	1,135	588	547	1.9	1.8	2.0
1997/98	68,388	38,104	30,284	1,186	637	549	1.7	1.7	1.8
1998/99	75,340	41,586	33,754	3,497	1,814	1,683	4.6	4.4	5.0
1999/00	91,037	50,459	40,576	6,295	3,294	3,001	6.9	6.5	7.4
2000/01	88,045	47,907	40,138	9,693	5,112	4,581	11.0	10.7	11.4
2001/02	97,678	53,409	44,269	11,722	6,178	5,544	12.0	11.6	12.5
2002/03	101,496	55,186	46,310	10,990	5,704	5,286	10.8	10.3	11.4
2003/04	99,216	54,309	44,907	13,682	7,062	6,620	13.8	13.0	14.7
2004/05	89,524	48,902	40,622	15,520	8,090	7,430	17.3	16.5	18.3
2005/06	73,222	39,781	33,441	14,492	7,423	7,069	19.8	18.7	21.1
2006/07	62,486	33,732	28,754	19,371	10,083	9,288	31.0	29.9	32.3
2007/08	60,940	33,506	27,434	20,349	10,821	9,528	33.4	32.3	34.7
2008/09	64,665	35,217	29,448	23,937	12,523	11,414	37.0	35.6	38.8
2009/10	69,624	37,899	31,725	26,164	13,644	12,520	37.6	36.0	39.5

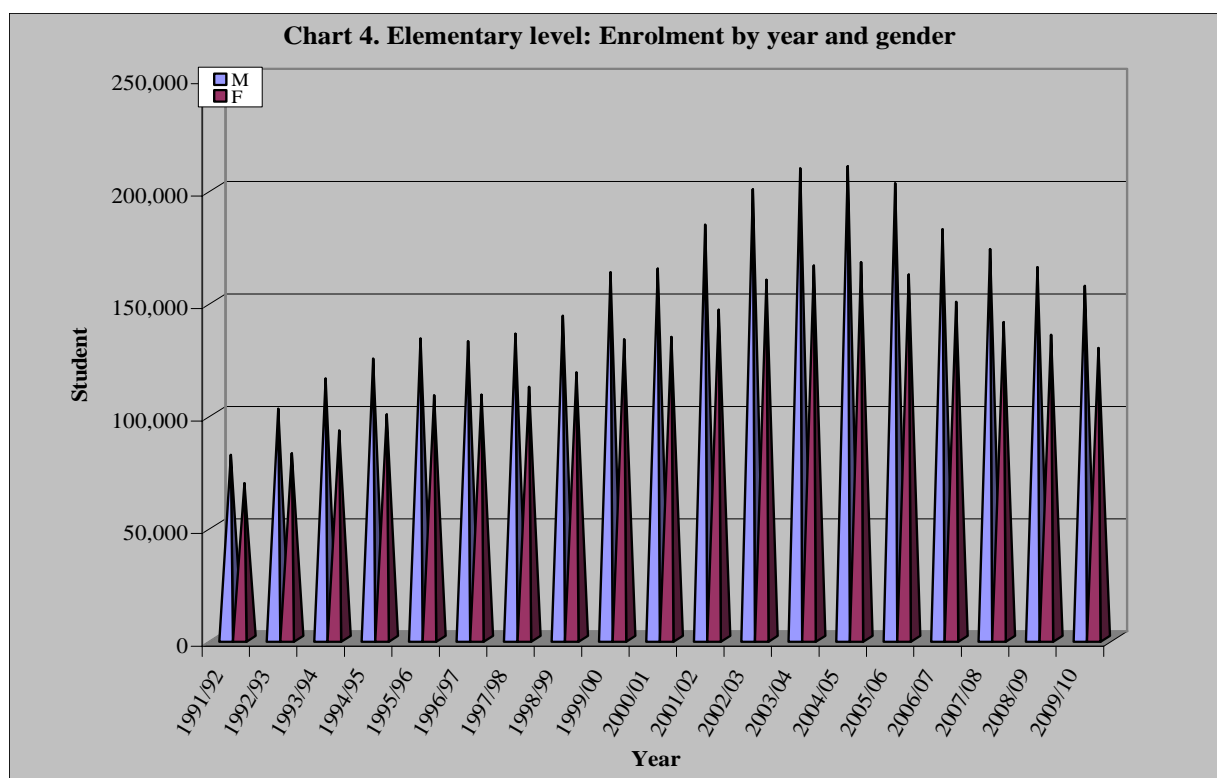
From the academic year 1991/92 until the academic year 1997/98 except for the academic year 1996/97 enrolment of under-aged was continuously decreasing. This was mainly because MoE regulations in those years did not allow children under 7 to be enrolled in elementary schools. Starting from the academic year 1997/98 the enrolment of under-aged children has been increasing continuously except for the academic year 2002/03. This is because age 6 students are allowed to attend in grade 1.

7. Children out of school

Table 15. Enrolment level: Percentage of children out of school, 1991/92-2009/10

Year	Population of 7-11.			Net enrolment 7-11.			NER	Number of children out of school 7-11			Percentage of children out of School 7-11
	T	M	F	T	M	F		T	M	F	
1991/92	375,234	198,552	176,682	93,087	48,397	44,690	24.8	282,147	150,155	131,992	75.2
1992/93	388,581	206,052	182,529	109,111	57,126	51,985	28.1	279,470	148,926	130,544	71.9
1993/94	401,679	213,000	188,679	113,612	59,645	53,967	28.3	288,067	153,355	134,712	71.7
1994/95	414,606	219,502	195,104	122,084	64,098	57,986	29.5	292,522	155,404	137,118	70.5
1995/96	427,429	225,658	201,771	133,496	69,958	63,538	31.2	293,933	155,700	138,233	68.8
1996/97	440,171	231,537	208,634	136,943	72,073	64,870	31.1	303,228	159,464	143,764	68.9
1997/98	451,076	236,293	214,783	150,751	80,212	70,539	33.4	300,325	156,081	144,244	66.6
1998/99	478,441	249,970	228,471	166,879	89,556	77,323	34.9	311,562	160,414	151,148	65.1
1999/00	470,652	239,841	230,811	194,963	104,748	90,215	41.4	275,689	135,093	140,596	58.6
2000/01	486,639	248,232	238,407	205,831	111,022	94,809	42.3	280,808	137,210	143,598	57.7
2001/02	504,246	257,793	246,453	232,030	125,941	106,089	46.0	272,216	131,852	140,364	54.0
2002/03	511,350	260,568	250,782	256,360	139,072	117,288	50.1	255,012	121,510	133,502	49.9
2003/04	522,975	268,340	254,635	269,326	146,379	122,947	51.5	250,252	120,296	129,956	47.9
2004/05	526,266	271,547	254,719	276,815	149,916	126,899	52.6	245,439	119,584	125,855	46.6
2005/06	518,357	268,669	249,688	272,401	146,588	125,813	52.6	245,956	122,081	123,875	47.5
2006/07	497,762	258,858	238,904	248,782	133,238	115,544	50.0	248,980	125,620	123,360	50.0
2007/08	468,165	243,937	224,228	233,590	125,816	107,774	49.9	234,575	118,121	116,454	50.1
2008/09	444,816	232,049	212,767	221,358	119,193	102,165	49.8	223,458	112,856	212,665	50.2
2009/10	432,867	225,517	207,350	214,592	115,928	98,664	49.6	218,275	109,589	108,686	50.4

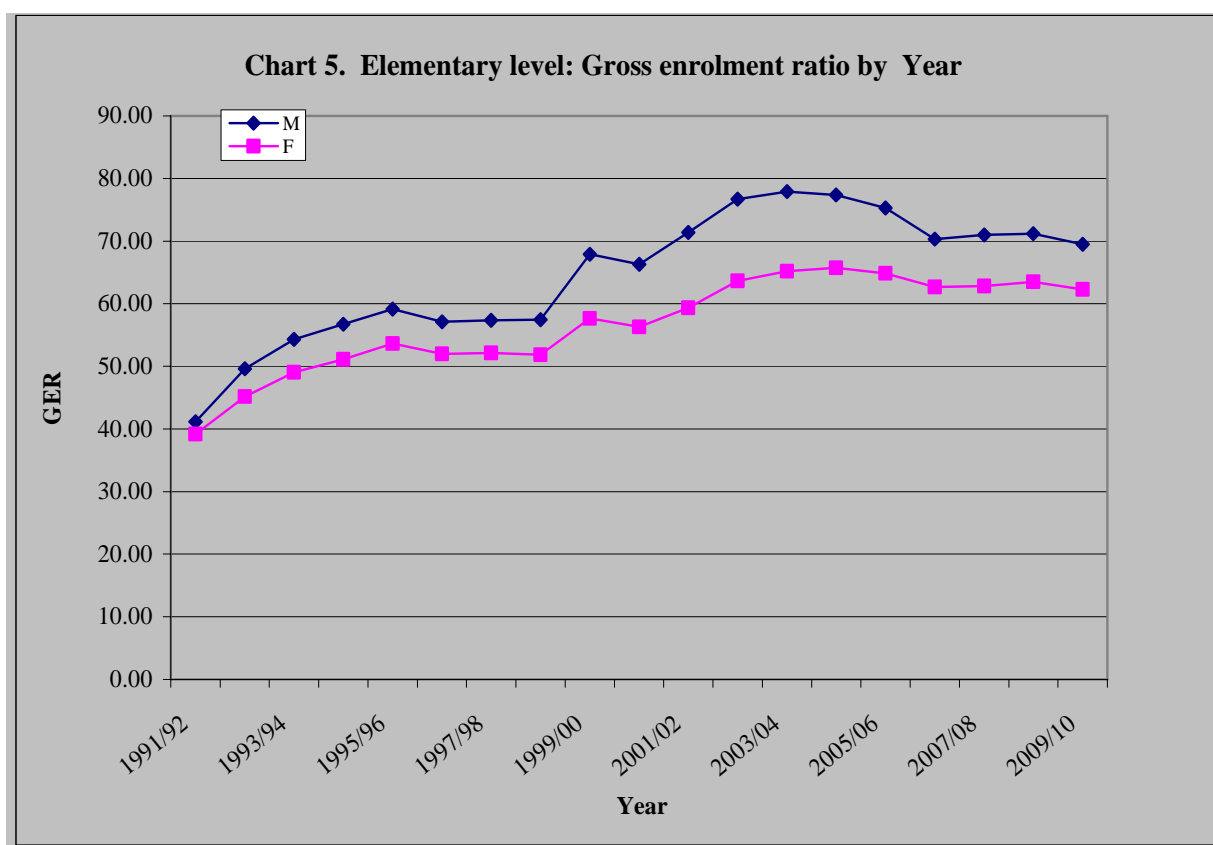
N.B in the previous publication NER of 2002/03 was mistakenly reported by 40.1 percent.



8. Gross enrolment ratio

Table 16. Elementary level: Gross enrolment ratio by year, 1991/92-2009/10

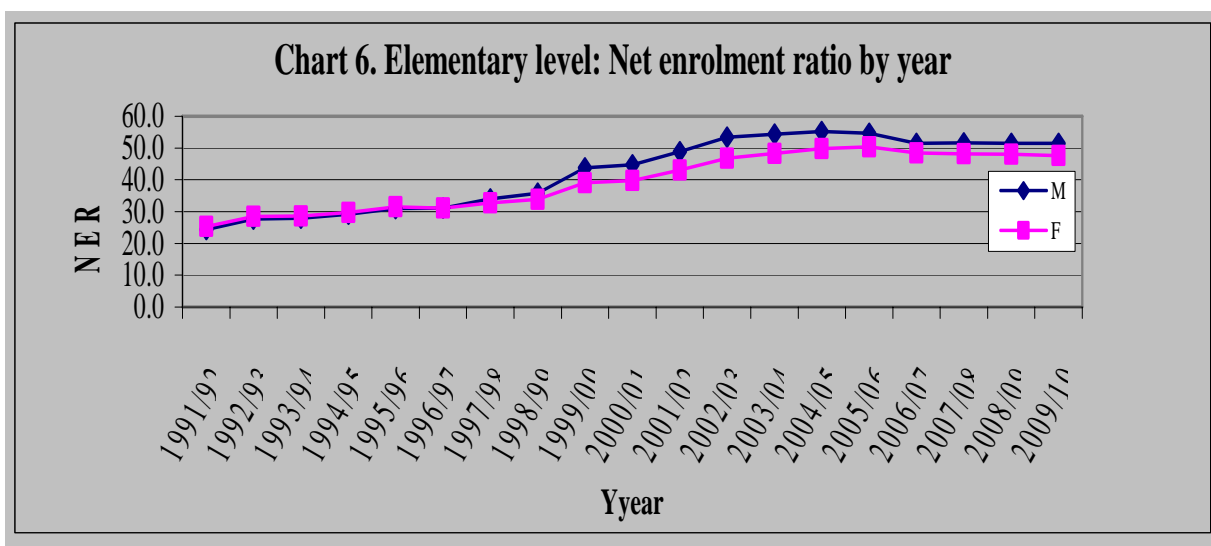
Year	Total Population 7-11			Enrolment in elementary level			Gross enrolment ratio		
	T	M	F	T	M	F	T	M	F
1991/92	375,234	198,552	176,682	150,982	81,746	69,236	40.2	41.2	39.2
1992/93	388,581	206,052	182,529	184,656	102,235	82,421	47.5	49.6	45.2
1993/94	401,679	213,000	188,679	208,199	115,663	92,536	51.8	54.3	49.0
1994/95	414,606	219,502	195,104	224,287	124,544	99,743	54.1	56.7	51.1
1995/96	427,429	225,658	201,771	241,725	133,471	108,254	56.5	59.2	53.7
1996/97	440,171	231,537	208,634	240,737	132,250	108,487	54.7	57.1	52.0
1997/98	451,076	236,293	214,783	247,499	135,569	111,930	54.9	57.4	52.1
1998/99	478,441	249,970	228,471	261,963	143,578	118,385	54.7	57.4	51.8
1999/00	470,652	239,841	230,811	295,941	162,896	133,045	62.9	67.9	57.6
2000/01	486,639	248,232	238,407	298,691	164,523	134,168	61.4	66.3	56.3
2001/02	504,246	257,793	246,453	330,278	184,060	146,218	65.5	71.4	59.3
2002/03	511,350	260,568	250,782	359,423	199,860	159,563	70.3	76.7	63.6
2003/04	522,975	268,340	254,635	374,997	209,043	165,954	71.7	77.9	65.8
2004/05	526,266	271,547	254,719	377,512	210,061	167,451	71.7	77.4	65.7
2005/06	518,357	268,669	249,688	364,263	202,388	161,875	70.3	75.3	64.8
2006/07	497,762	258,858	238,904	331,855	182,100	149,755	66.7	70.3	62.7
2007/08	468,165	243,937	224,228	314,034	173,242	140,792	67.1	71.0	62.8
2008/09	444,816	232,049	212,767	300,129	165,111	135,018	67.5	71.2	63.5
2009/10	432,867	225,517	207,350	286,021	156,803	129,218	66.1	69.5	62.3



9. Net enrolment ratio

Table 17. Elementary level: Net enrolment ratio by year: 1991/92-2009/10

Year	Population age 7-11.			Net enrolment			Net enrolment ratio %		
	T	M	F	T	M	F	T	M	F
1991/92	375,234	198,552	176,682	93,087	48,397	44,690	24.8	24.4	25.3
1992/93	388,581	206,052	182,529	109,111	57,126	51,985	28.1	27.7	28.5
1993/94	401,679	213,000	188,679	113,612	59,645	53,967	28.3	28.0	28.6
1994/95	414,606	219,502	195,104	122,084	64,098	57,986	29.5	29.2	29.7
1995/96	427,429	225,658	201,771	133,496	69,958	63,538	31.3	31.0	31.5
1996/97	440,171	231,537	208,634	136,943	72,073	64,870	31.1	31.1	31.1
1997/98	451,076	236,293	214,783	150,751	80,212	70,539	33.4	34.0	32.8
1998/99	478,441	249,970	228,471	166,879	89,556	77,323	34.9	35.8	33.8
1999/00	470,652	239,841	230,811	194,963	104,743	90,215	41.4	43.7	39.1
2000/01	486,639	248,232	238,407	205,831	111,022	94,809	42.3	44.7	39.8
2001/02	504,246	257,793	246,453	232,030	125,941	106,089	46.0	48.9	43.1
2002/03	511,350	260,568	250,782	256,360	139,072	117,288	50.1	53.4	46.8
2003/04	522,975	268,340	254,635	269,326	146,379	122,947	51.1	54.4	48.3
2004/05	526,266	271,547	254,719	276,815	149,916	126,899	52.6	55.2	49.8
2005/06	518,357	268,669	249,688	272,401	146,588	125,813	52.6	54.6	50.4
2006/07	497,762	258,858	238,904	248,782	133,238	115,544	50.0	51.5	48.4
2007/08	468,165	243,937	224,228	233,590	125,816	107,774	49.9	51.6	48.1
2008/09	444,816	232,049	212,767	221,358	119,193	102,165	49.8	51.4	48.0
2009/10	432,867	225,517	207,350	214,592	115,928	98,664	49.6	51.4	47.6



10. Percentage of repeaters

Table 18. Elementary level: Percentage of repeaters by gender and year, 1991/92-2009/10

Year	Enrolment			Repeaters			Percentage of repeaters		
	T	M	F	T	M	F	T	M	F
1991/92	150,982	81,746	69,236	N. A.	N.A.	N. A.	N.A.	N. A.	N.A.
1992/93	184,656	102,235	82,421	47,139	23,289	23,850	25.5	22.8	28.9
1993/94	208,199	115,663	92,536	41,694	20,632	21,062	20.0	17.8	22.8
1994/95	224,287	124,544	99,743	42,426	21,177	21,249	18.9	17.0	21.3
1995/96	241,725	133,471	108,254	49,172	24,470	24,702	20.3	18.3	22.8
1996/97	240,737	132,250	108,487	49,246	25,006	24,240	20.5	18.9	22.3
1997/98	247,499	135,569	111,930	56,157	28,613	27,544	22.7	21.1	24.6
1998/99	261,963	143,578	118,385	50,820	26,168	24,652	19.4	18.2	20.8
1999/00	295,941	162,896	133,045	57,366	30,798	26,568	19.4	18.9	20.0
2000/01	298,691	164,523	134,168	41,387	22,499	18,888	13.9	13.7	14.1
2001/02	330,278	184,060	146,218	47,249	21,005	26,244	14.3	11.4	17.9
2002/03	359,399	199,842	159,557	73,114	39,485	33,629	20.3	19.8	21.1
2003/04	374,997	209,043	165,954	80,020	43,208	36,812	21.3	20.7	22.2
2004/05	377,512	210,061	167,451	48,629	27,373	21,256	12.9	13.0	12.7
2005/06	364,263	202,388	161,875	49,923	28,068	21,858	13.7	13.9	13.5
2006/07	331,855	182,100	149,755	48,443	27,213	21,230	14.6	14.9	14.2
2007/08	314,034	173,242	140,792	48,393	27,773	20,620	15.4	16.0	14.6
2008/09	300,129	165,111	135,018	41,029	23,757	17,272	13.7	14.4	12.8
2009/10	286,021	156,803	129,218	37,829	22,623	15,206	13.2	14.4	11.8

N.B Repeaters refer to those those who were repeating the same grade during 2009/10

11. Disparities among zobas

Table 19. Elementary level: Deviation from the national GER by zoba, 2009/10

Zoba	Population age 7-11			Gross enrolment			GER			Deviation from national ratio		
	T	M	F	T	M	F	T	M	F	T	M	F
Anseba	61,519	32,051	29,469	42,975	23,887	19,088	69.9	74.5	64.8	3.8	5.0	2.5
Debub	109,237	56,911	52,326	94,898	51,824	43,074	86.9	91.1	82.3	20.8	21.6	20.0
Deb-Keih-B	9,257	4,823	4,434	4,389	2,879	1,510	47.4	59.7	34.1	-18.7	-9.8	-28.2
Gash Barka	101,625	52,945	48,680	57,090	31,419	25,671	56.2	59.3	52.7	-9.9	-10.2	-9.6
Maekel	78,354	40,821	37,533	61,876	32,481	29,395	79.0	79.6	78.3	12.9	10.1	16.0
Sem-Keih-B	72,874	37,966	34,908	24,793	14,313	10,480	34.0	37.7	30.0	-32.1	-31.8	-32.3
Total	432,866	225,517	207,350	286,021	156,803	129,218	66.1	69.5	62.3	0.0	0.0	0.0

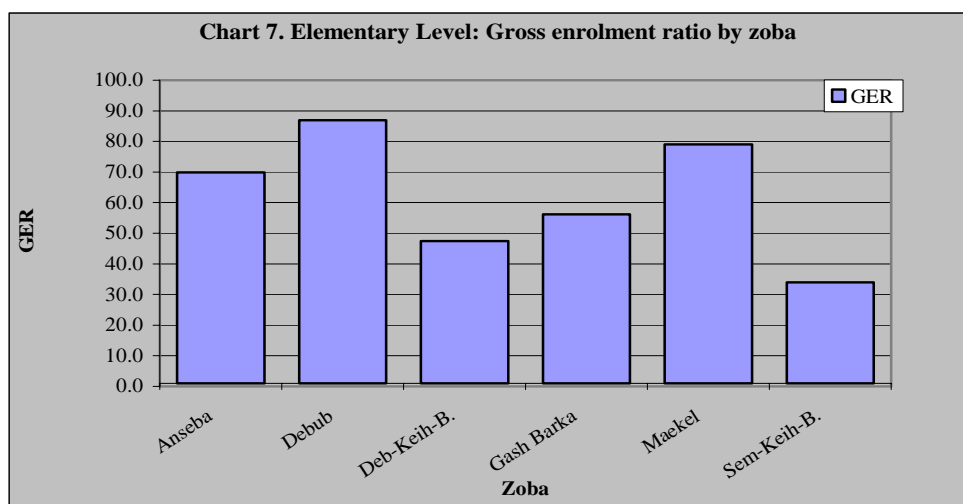


Table 20. Elementary level: Deviation from the national NER by zoba, 2009/10

Zoba	Population of age 7-11			Net enrolment			NER			Deviation from national GER		
	T	M	F	T	M	F	T	M	F	T	M	F
Anseba	61,519	32,051	29,469	32,618	17,903	14,715	53.0	55.9	49.9	3.4	4.5	1.9
Debub	109,237	56,911	52,326	69,243	37,134	32,109	63.4	65.2	61.4	13.8	13.8	13.4
Deb-Keih-B	9,257	4,823	4,434	3,211	2,046	1,165	34.7	42.4	26.3	-14.9	-9.0	-21.7
Gash-Barka	101,625	52,945	48,680	43,722	23,776	19,946	43.0	44.9	41.0	-6.6	-6.5	-7.0
Maekel	78,354	40,821	37,533	47,279	24,396	22,883	60.3	59.8	61.0	10.7	8.4	13.0
Sem-Keih-B	72,874	37,966	34,908	18,519	10,673	7,846	25.4	28.1	22.5	-24.2	-23.3	-25.5
Total	432,866	225,517	207,350	214,592	115,928	98,664	49.6	51.4	48.0	0.0	0.0	0.0

VI. Middle level

1. Background

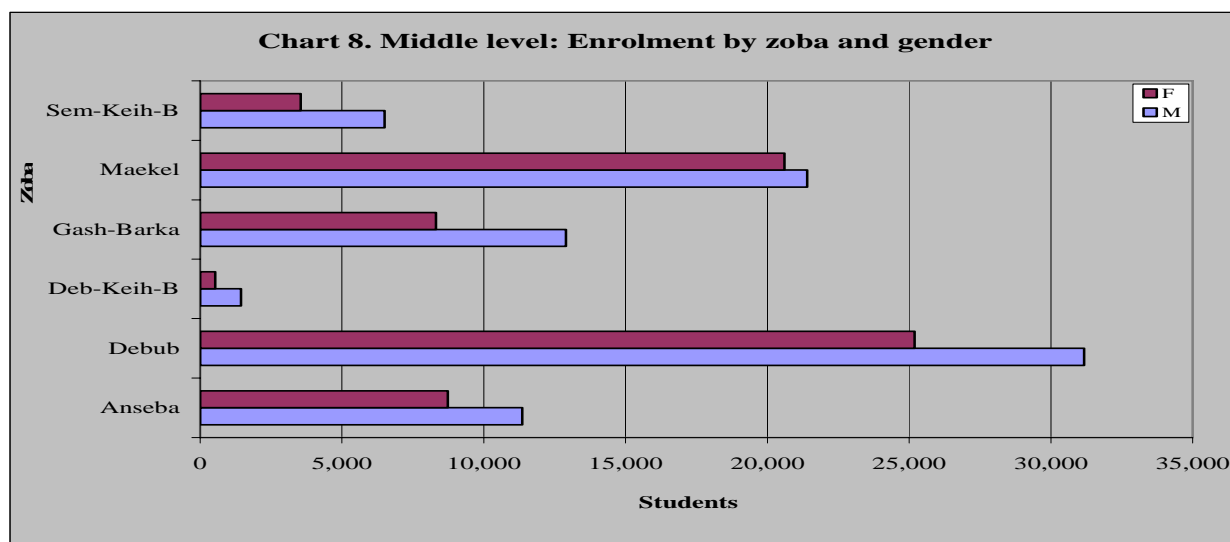
The duration of Middle level is three years (Grades 6, 7 and 8). It is the second level of the compulsory basic education. English is the language of instruction in this level. The official School age is 12-14.

2. Enrolment

Enrolment in this level for the academic year 2009/10 was 151,702. Female enrolment constitutes 66,930 (44.12%) of the total number. Non-government enrolment in this level is 8,300 (5.5%)

Table 21. Middle level: Percentage of change by zoba and gender, 2009/10

Zoba	2008/09			2009/10			Percentage of change		
	T	M	F	T	M	F	T	M	F
Anseba	19,649	11,425	8,224	20,096	11,360	8,736	2.3	-0.6	6.2
Debub	56,894	32,783	24,111	56,366	31,170	25,196	-0.9	-4.9	4.5
Deb-Keih-B	2,063	1,577	486	1,963	1,434	529	-4.8	-9.1	8.8
Gash-Barka	20,160	12,940	7,220	21,214	12,898	8,316	5.2	-0.3	15.2
Maekel	42,634	21,851	20,783	42,010	21,403	20,607	-1.5	-2.1	-0.8
Sem-Keih-B	9,731	6,441	3,290	10,053	6,507	3,546	3.3	1.0	7.8
Totals	151,131	87,017	64,114	151,702	84,772	66,930	0.4	-2.6	4.4



3. Gross enrolment ratio

Table 22. Middle level: Gross enrolment ratio by year, 1991/92-2009/10

Year	Population 12-13			Enrolment			Gross enrolment ratio		
	T	M	F	T	M	F	T	M	F
1991/92	136,712	72,904	63,808	27,917	14,414	13,503	20.2	19.8	21.2
1992/93	141,576	75,657	65,919	28,431	15,052	13,379	20.1	19.9	20.3
1993/94	146,349	78,209	68,140	32,781	18,129	14,652	22.4	23.2	21.5
1994/95	151,058	80,597	70,461	34,995	19,310	15,685	23.8	24.0	22.3
1995/96	155,725	82,856	72,869	39,751	21,648	18,103	25.5	26.1	24.8
1996/97	160,363	85,015	75,348	47,460	26,739	20,721	29.6	31.5	27.5
1997/98	164,331	86,762	77,569	57,152	32,998	24,154	34.8	38.0	31.1
1998/99	174,295	91,783	82,512	67,021	37,731	29,290	38.5	41.1	35.5
1999/00	164,059	81,820	82,239	74,317	41,033	33,284	45.3	50.2	40.5
2000/01	169,628	84,683	84,945	76,564	41,457	35,107	45.1	49.0	41.3
2001/02	175,758	87,947	87,811	80,882	46,215	34,667	46.0	52.6	39.5
2002/03	178,245	88,891	89,354	87,019	50,138	36,881	48.8	56.4	41.3
	Population 12-14			Enrolment			Gross enrolment ratio		
2003/04	274,014	136,804	137,210	122,966	73,742	49,224	44.9	53.9	35.9
2004/05	287,129	143,975	143,154	139,029	85,033	53,996	48.4	59.1	37.7
2005/06	299,324	151,298	148,026	148,082	90,634	57,448	49.5	59.9	38.8
2006/07	331,538	178,807	152,731	141,081	81,739	59,342	42.3	45.7	38.9
2007/08	322,062	165,323	156,739	144,031	83,766	60,265	44.7	50.7	38.4
2008/09	323,190	166,767	156,423	151,131	87,017	64,114	46.8	52.2	41.0
2009/10	312,495	161,895	150,600	151,702	84,772	66,930	48.5	52.4	44.4

N.B In the academic year 2003/04 enrolment in middle school is seen to increase tremendously; this is due to the restructuring of grades. Middle level was restructured from grade 6-7 to 6-8.

Chart 9 Middle level: Enrolment by year and gender

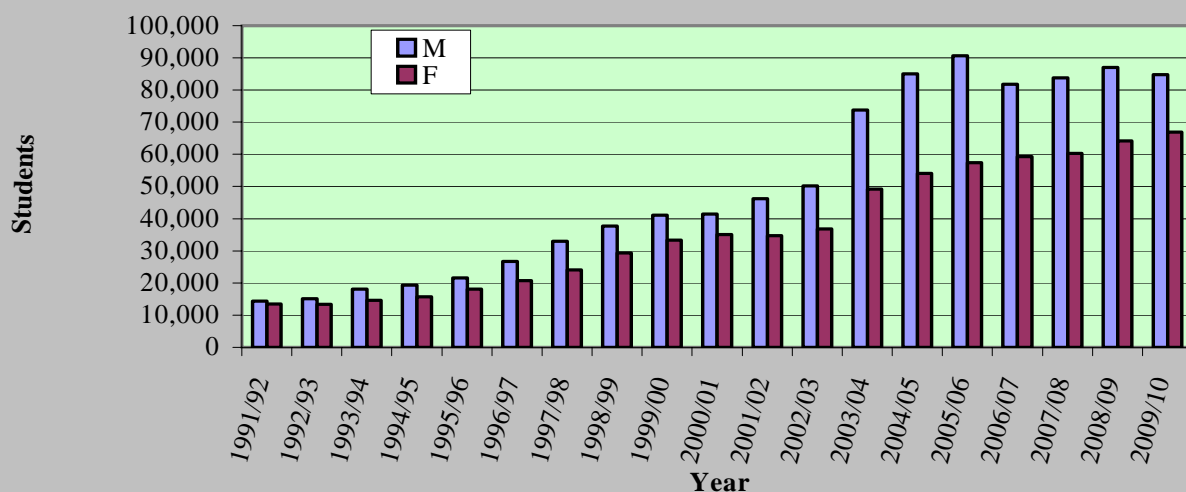


Table 23. Middle level: Deviation from the national GER by zoba, 2009/10

Zoba	Population age 12-14			Gross enrolment			GER			Deviation from national ratio		
	T	M	F	T	M	F	T	M	F	T	M	F
Anseba	44,412	23,009	21,403	20,096	11,360	8,736	45.2	49.4	40.8	-3.3	-3.0	-3.6
Debub	78,861	40,856	38,005	56,366	31,170	25,196	71.5	76.3	66.3	23.0	23.9	21.9
Deb-Keih-B	6,683	3,462	3,221	1,963	1,434	529	29.4	41.4	16.4	-19.1	-11.0	-28.0
Gash Barka	73,365	38,008	35,357	21,214	12,898	8,316	28.9	33.9	23.5	-19.6	-18.5	-20.9
Mackel	56,565	29,305	27,260	42,010	21,403	20,607	74.3	73.0	75.6	25.8	20.6	31.2
Sem-Keih-B	52,609	27,255	25,354	10,053	6,507	3,546	19.1	23.9	14.0	-29.4	-28.5	-30.4
Total	312,495	161,895	150,600	151,702	84,772	66,930	48.5	52.4	44.4	0.0	0.0	0.0

4. Net enrolment ratio

Table 24. Middle level: Net enrolment ratio by year, 1991/92-2009/10

Year	Population 12-13			Net enrolment			Net enrolment ratio		
	T	M	F	T	M	F	T	M	F
1991/92	136,712	72,904	63,808	9,727	5,111	4,616	7.1	7.1	7.2
1992/93	141,576	75,657	65,919	7,941	4,275	3,666	5.6	5.7	5.6
1993/94	146,349	78,209	68,140	8,594	4,604	3,990	5.9	5.9	5.7
1994/95	151,058	80,597	70,461	9,074	4,763	4,311	6.0	5.9	6.1
1995/96	155,725	82,856	72,869	9,988	5,299	4,689	6.4	6.4	6.4
1996/97	160,363	85,015	75,348	12,604	6,925	5,679	7.9	8.2	7.5
1997/98	164,331	86,762	77,569	14,751	8,062	6,689	9.0	9.3	8.6
1998/99	174,295	91,783	82,512	15,878	8,400	7,478	9.1	9.2	9.1
1999/00	164,059	81,820	82,239	18,201	9,552	8,649	11.1	11.7	10.5
2000/01	169,628	84,683	84,945	20,409	10,639	9,770	12.0	12.6	11.5
2001/02	175,758	87,947	87,811	22,348	11,718	10,630	12.7	13.3	12.1
2002/03	178,245	88,891	89,354	24,584	13,057	11,527	13.8	14.7	12.9
	Population 12-14			Enrolment			Net enrolment ratio		
2003/04	274,014	136,804	137,210	51,795	28,632	23,163	18.9	20.9	16.9
2004/05	287,129	143,975	143,154	60,323	33,879	26,444	21.0	23.5	18.5
2005/06	299,324	151,298	148,026	66,708	37,334	29,374	22.3	24.7	19.8
2006/07	311,538	158,807	152,731	72,729	40,276	32,453	23.3	25.4	21.3
2007/08	322,062	165,323	156,739	80,570	44,496	36,074	25.0	26.9	23.0
2008/09	323,190	166,767	156,423	86,569	47,349	39,220	26.8	28.4	25.1
2009/10	312,495	161,895	150,600	91,194	49,025	42,170	29.2	30.3	28.0

Table 25. Middle level: Deviation from national NER by zoba, 2009/10

Zoba	Population age 12-14			Net enrolment			NER			Deviation from national ratio		
	T	M	F	T	M	F	T	M	F	T	M	F
Anseba	44,412	23,009	21,403	12,428	6,957	5,471	28.0	30.2	25.6	-1.2	-0.1	-2.4
Debub	78,861	40,856	38,005	32,954	17,288	15,666	41.8	42.3	41.2	12.6	12.0	13.2
Deb-Keih-B	6,683	3,462	3,221	874	579	296	13.1	16.7	9.2	-16.1	-13.6	-18.8
Gash Barka	73,365	38,008	35,357	12,398	7,259	5,139	16.9	19.1	14.5	-12.3	-11.2	-13.5
Maekel	56,565	29,305	27,260	26,462	13,072	13,390	46.8	44.6	49.1	17.6	14.3	21.1
Sem-Keih-B	52,609	27,255	25,354	6,078	3,870	2,208	11.6	14.2	8.7	-17.6	-16.1	-19.3
Total	312,495	161,895	150,600	91,194	49,025	42,170	29.2	30.3	28.0	0.0	0.0	0.0

5. Percentage of repeaters

Table 26. Middle level: Percentage of repeaters by year, 1991/92-2008/09

Year	Enrolment			Repeaters			Percentage of Repeaters		
	T	M	F	T	M	F	T	M	F
1991/92	27,917	14,414	13,503	N.A	N.A	N.A	N.A	N.A	N.A
1992/93	28,431	15,052	13,379	12,256	4,116	8,140	43.1	27.3	60.8
1993/94	32,781	18,129	14,652	5,544	2,120	3,424	16.9	11.7	23.4
1994/95	34,995	19,310	15,685	4,736	1,781	2,955	13.5	9.2	18.8
1995/96	39,751	21,648	18,103	5,329	1,918	3,411	13.4	8.9	18.8
1996/97	47,460	26,739	20,721	6,193	2,385	3,808	13.1	8.9	18.4
1997/98	57,152	32,998	24,154	8,707	3,401	5,306	15.2	10.3	22.0
1998/99	67,021	37,731	29,290	12,119	5,042	7,077	18.1	13.4	24.2
1999/00	74,317	41,033	33,284	15,632	7,053	8,579	21.0	17.2	25.8
2000/01	76,564	41,457	35,107	16,870	8,025	8,845	22.0	19.4	25.2
2001/02	80,882	46,215	34,667	17,419	9,029	8,390	21.5	19.5	24.2
2002/03	87,019	50,138	36,881	23,126	12,163	10,963	26.6	24.3	29.7
2003/04	122,966	73,742	49,224	21,352	12,648	8,704	17.4	17.2	17.7
2004/05	139,029	85,033	53,996	15,735	10,451	5,286	11.3	12.3	9.8
2005/06	148,082	90,634	57,448	25,283	16,719	8,564	17.1	18.5	14.9
2006/07	141,081	81,342	59,342	21,919	12,723	9,196	15.4	15.6	15.5
2007/08	144,031	83,766	60,265	20,151	11,852	8,299	14.0	14.1	13.8
2008/09	151,131	87,017	64,114	21,925	12,762	9,163	14.5	14.7	14.3
2009/10	151,702	84,772	66,930	18,922	10,872	8,050	12.5	12.8	12.0

The above table indicates total number of repeaters repeating the same grade in current academic year.

The percentage of repeaters has been declining between 1992/93 and 1996/97 but has been increasing starting from 1996/97 up to 2002/03 with the exception of 2001/02. From 2002/03 up to 2009/10 a decreasing trend is seen except for the academic years 2005/06 and 2008/09.

VII. Secondary level

1. Background

The duration of Secondary level is four years (Grades 9-12). The official school age is 15-18.

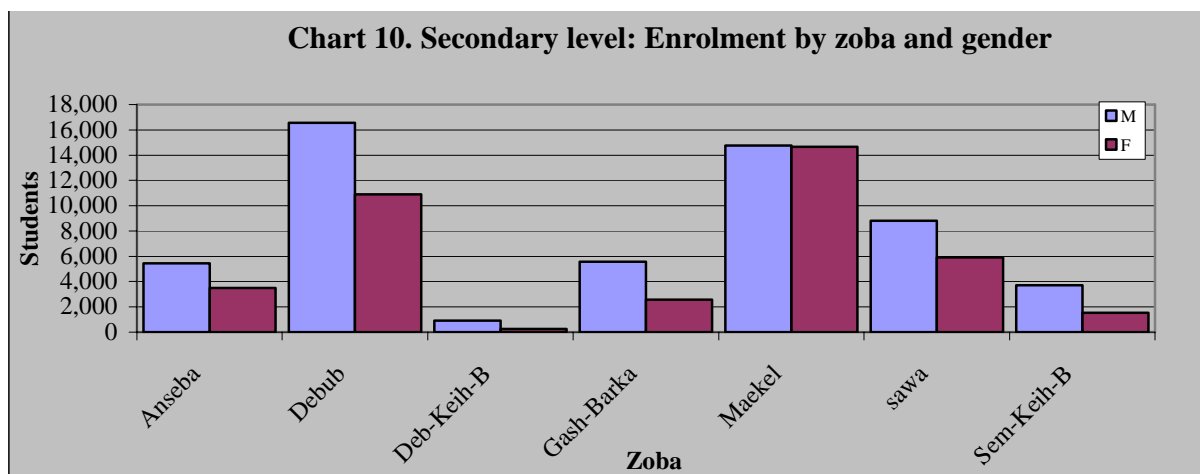
2. Enrolment

Enrolment for the academic year 2009/10 was 95,076. Female enrolment constitutes 39,306 (41.3%). Approximately 2.9% of the students in the Secondary level were attending non-government schools.

Table 27. Secondary level: Percentage of change by gender and zoba, 2009/10

(Only grade 12 is taught in Sawa)

Zoba	2008/09			2009/10			Percentage of change		
	T	M	F	T	M	F	T	M	F
Anseba	8,483	5,335	3,148	8,954	5,452	3,502	5.6	2.2	11.2
Debub	28,493	17,931	10,562	27,445	16,562	10,883	-3.7	-7.6	3.0
Beb-Keih-B	1,137	878	259	1,173	925	248	3.2	5.4	-4.2
Gash-Barka	7,787	5,442	2,345	8,125	5,560	2,565	4.3	2.2	9.4
Maekle	26,335	13,272	13,063	29,401	14,746	14,655	11.6	11.1	12.2
Sawa	13,320	8,110	5,210	14,721	8,805	5,916	10.5	8.6	13.6
Sem-Keih-B	4,206	3,029	1,177	5,257	3,720	1,537	25.0	22.8	30.6
Total	89,761	53,997	35,764	95,076	55,770	39,306	5.9	3.3	9.9



3. Gross enrolment ratio

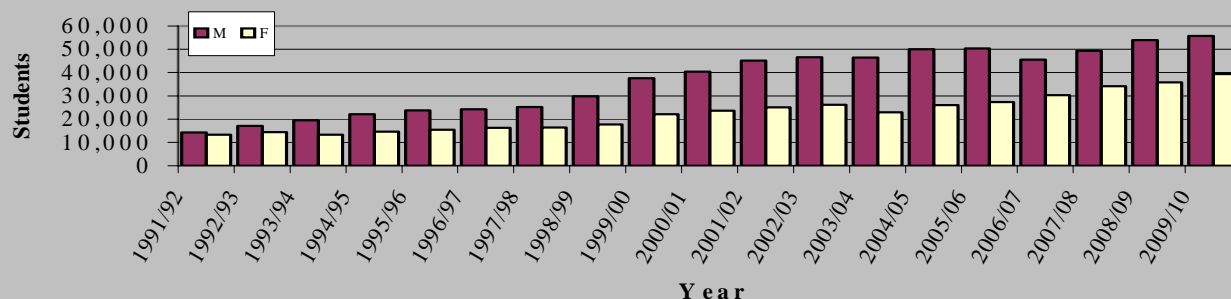
Table 28. Secondary level: Gross enrolment ratio by year, 1991/92-2009/10

Year	Population of age 14-17			Enrolments			Gross enrolment ratio		
	T	M	F	T	M	F	T	M	F
1991/92	210,515	110,133	100,382	27,627	14,281	13,346	13.1	13.0	13.3
1992/93	217,998	114,293	103,705	31,531	17,141	14,390	14.5	15.0	13.9
1993/94	225,344	118,144	107,200	32,756	19,432	13,324	14.5	16.5	12.4
1994/95	232,603	121,753	110,850	36,728	22,097	14,631	15.8	18.2	13.2
1995/96	239,805	125,167	114,638	39,188	23,713	15,475	16.3	19.0	13.5
1996/97	246,964	128,427	118,537	40,594	24,262	16,332	16.4	18.9	13.8
1997/98	253,097	131,066	122,031	41,615	25,198	16,417	16.4	19.2	13.5
1998/99	268,460	138,652	129,808	47,533	29,777	17,756	17.7	21.5	13.7
1999/00	272,871	139,459	133,412	59,626	37,533	22,093	21.9	26.9	16.6
2000/01	282,140	144,338	137,802	63,951	40,355	23,596	22.7	28.0	17.1
2001/02	292,355	149,903	142,452	70,183	45,129	25,054	24.0	30.1	17.6
2002/03	296,466	151,511	144,955	72,818	46,633	26,185	24.6	30.8	18.1
	Population of age 15-18			Enrolment			Gross enrolment ratio		
2003/04	296,218	151,315	144,903	69,401	46,449	22,952	23.4	30.7	15.8
2004/05	316,462	160,167	156,295	76,051	50,010	26,041	24.0	31.2	16.7
2005/06	336,080	168,631	167,449	77,644	50,351	27,293	23.1	29.9	16.3
2006/07	355,028	177,431	177,597	75,800	45,471	30,329	21.4	25.6	17.1
2007/08	373,008	186,640	186,368	83,411	49,323	34,088	22.4	26.4	18.3
2008/09	389,902	196,152	193,750	89,761	53,997	35,764	23.0	27.5	18.5
2009/10	406,785	206,246	200,539	95,076	55,770	39,306	23.4	27.0	19.6

Table 29. Secondary level: Deviation from national GER by zoba, 2009/10

Zoba	Population age 15-18			Gross enrolment			GER			Deviation from national ratio		
	T	M	F	T	M	F	T	M	F	T	M	F
Anseba	57,812	29,312	28,501	8,954	5,452	3,502	15.5	18.6	12.3	-7.9	-8.4	-7.3
Debub	102,655	52,048	50,608	27,445	16,562	10,883	26.7	31.8	21.5	3.3	4.8	1.9
Deb-Keih-B	8,699	4,411	4,289	1,173	925	248	13.5	21.0	5.8	-9.9	-6.0	-13.8
Gash Barka	95,502	48,421	47,081	8,125	5,560	2,565	8.5	11.5	5.4	-14.9	-15.5	-14.2
Maekel	73,633	37,333	36,300	29,401	14,746	14,655	39.9	39.5	40.4	16.5	12.5	20.8
Sawa	-	-	-	14,721	8,805	5,916	-	-	-	-	-	-
Sem-Keih-B	68,483	34,722	33,761	5,257	3,720	1,537	7.7	10.7	4.6	-15.7	-16.3	-15.0
Total	406,784	206,247	200,540	95,076	55,770	39,306	23.4	27.0	19.6	0.0	0.0	0.0

Chart 11. Secondary level: Enrolment by year and gender



N.B Only grade 12 is taught in sawa

4. Net enrolment ratio

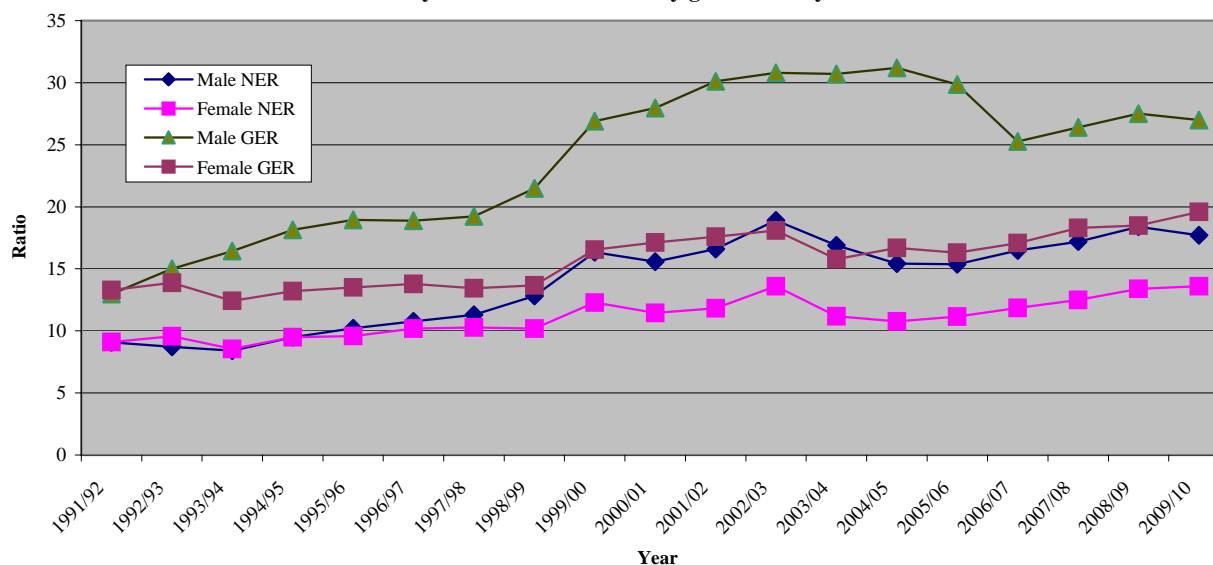
Table 30. Secondary level: Net enrolment ratio by year, 1991/92-2009/10

Year	Population of age 14-17			Net enrolment			Net enrolment ratio		
	T	M	F	T	M	F	T	M	F
1991/92	210,515	110,133	100,382	19,131	9,999	9,132	9.1	9.1	9.1
1992/93	217,998	114,293	103,705	19,880	9,951	9,929	9.1	8.7	9.6
1993/94	225,344	118,144	107,200	19,097	9,932	9,165	8.5	8.4	8.6
1994/95	232,603	121,753	110,850	22,108	11,584	10,524	9.5	9.5	9.5
1995/96	239,805	125,167	114,638	23,780	12,788	10,992	9.9	10.2	9.6
1996/97	246,964	128,427	118,537	25,911	13,822	12,089	10.5	10.8	10.2
1997/98	253,097	131,066	122,031	27,357	14,817	12,540	10.8	11.3	10.3
1998/99	268,460	138,652	129,808	30,995	17,755	13,240	11.6	12.8	10.2
1999/00	272,871	139,459	133,412	39,197	22,800	16,397	14.4	16.4	12.3
2000/01	282,140	144,338	137,802	38,271	22,482	15,789	13.6	15.6	11.5
2001/02	292,355	149,903	142,452	41,748	24,906	16,842	14.3	16.6	11.8
2002/03	296,466	151,511	144,955	48,269	28,612	19,657	16.3	18.9	13.6
	Population 15-18			Net enrolment			Net enrolment ratio		
2003/04	296,218	151,315	144,903	41,757	25,549	16,208	14.1	16.9	11.2
2004/05	316,462	160,167	156,295	41,523	24,702	16,821	13.1	15.4	10.8
2005/06	336,080	168,631	167,449	44,637	25,942	18,695	13.3	15.4	11.2
2006/07	355,028	177,431	177,597	50,266	29,245	21,021	14.2	16.5	11.8
2007/08	373,008	186,640	186,368	56,261	32,261	23,310	15.1	17.2	12.5
2008/09	389,902	196,152	193,750	61,952	36,078	25,874	15.9	18.4	13.4
2009/10	406,785	206,246	200,539	63,772	36,413	27,359	15.7	17.7	13.6

Table 31. Secondary Level: Deviation from national NER by zoba, 2009/10

Zoba	Population age 15-18			Net enrolment			NER			Deviation from national ratio		
	T	M	F	T	M	F	T	M	F	T	M	F
Anseba	57,812	29,312	28,501	6,574	3,930	2,644	11.4	13.4	9.3	-4.3	-4.3	-4.3
Debub	102,655	52,048	50,608	20,016	11,830	8,186	19.5	22.7	16.2	3.8	5.0	2.6
Deb-Keih-B	8,699	4,411	4,289	733	564	169	8.4	12.8	3.9	-7.3	-4.9	-9.7
Gash Barka	95,502	48,421	47,081	6,101	4,097	2,004	6.4	8.5	4.3	-9.3	-9.2	-9.3
Maekel	73,633	37,333	36,300	23,086	11,476	11,610	31.4	30.7	32.0	15.7	13.0	18.4
Sawa	-	-	-	3,661	1,966	1,695	-	-	-	-	-	-
Sem-Keih-B	68,483	34,722	33,761	3,601	2,550	1,051	5.3	7.3	3.1	-10.4	-10.4	-10.5
Total	406,784	206,247	200,540	63,772	36,413	27,359	15.7	17.7	13.6	0.0	0.0	0.0

Chart 12. Secondary level: GER and NER by gender and year



5. Percentage of repeaters

Table 32. Secondary level: Percentage of repeaters by year, 1991/92-2009/10

Year	Enrolment			Repeaters			Percentage		
	T	M	F	T	M	F	T	M	F
1991/92	27,627	14,281	13,346	11,072	4,241	6,831	40.1	29.7	51.2
1992/93	31,531	17,141	14,390	11,426	4,341	7,085	36.2	25.3	49.2
1993/94	32,756	19,432	13,324	7,504	3,212	4,292	22.9	16.5	32.2
1994/95	36,728	22,097	14,631	6,182	2,704	3,478	16.8	12.2	23.8
1995/96	39,188	23,713	15,475	7,296	3,113	4,183	18.6	13.1	27.0
1996/97	40,594	24,262	16,332	7,135	3,272	3,863	17.6	13.5	23.7
1997/98	41,615	25,198	16,417	7,648	3,305	4,343	18.4	13.1	26.4
1998/99	47,533	29,777	17,756	5,941	2,813	3,128	12.4	9.4	17.6
1999/00	57,334	36,504	20,830	7,640	3,999	3,641	13.3	11.0	17.5
2000/01	63,951	40,355	23,596	11,627	6,747	4,880	18.2	16.7	20.7
2001/02	70,183	45,129	25,054	13,321	7,902	5,419	19.0	17.5	21.6
2002/03	72,818	46,633	26,185	13,922	8,363	5,559	19.1	17.9	21.2
2003/04	69,401	46,449	22,952	11,437	7,418	4,019	16.8	16.0	17.5
2004/05	76,051	50,010	26,041	4,066	3,258	808	5.3	6.5	3.1
2005/06	77,644	50,351	27,293	3,066	2,765	301	4.0	5.5	1.1
2006/07	75,800	45,471	30,329	6,190	4,465	1,725	8.2	9.8	5.7
2007/08	83,411	49,323	34,088	4,998	3,318	1,680	6.0	6.7	4.9
2008/09	89,761	53,997	35,764	6,213	4,426	1,787	6.9	8.2	5.0
2009/10	95,076	55,770	39,306	3,938	1,147	2,791	4.1	2.1	7.1

N.B. The above table indicates total number of repeaters repeating the same grade in current academic year.

VIII. Internal efficiency

1. Length of school year.

The duration of the school year in the academic year 2009/10 was 180 days in the highlands and 181 days in the lowlands. The number of periods per week in grades 1, 2, and 3 were 26, 27, and 28 respectively and in grades 4 and 5 were 30.

In the academic year 2009/10, schooling in the highlands began on August 27 and ended on June 30. In the lowlands it began on September 3 and ended on June 16. Schools in the lowlands, teach 6 days a week while schools in the highlands, teach 5 days a week.

The duration of the school year in the academic year 2009/10 is shown in table 32

Table 33. Elementary level: Duration of school year, 2009/10

Grade	Periods per week	Length of a period (minute)	Total number of periods per year	Contact hrs.
1	29	40	832	555
2	27	40	864	576
3	28	40	898	599
4	30	40	960	640
5	30	40	960	640

Duration of school year in both locations is the same.

2. All grades: Flow rates

Table 34. All grades: Flow rates by gender and grade, 2009/10

Grade	Dropout			Promotion			Repetition		
	M	F	T	M	F	T	M	F	T
1	8.9	7.2	8.2	78.1	80.9	79.4	13.0	11.8	12.4
2	5.7	4.7	5.2	77.7	80.8	79.1	16.7	14.5	15.7
3	5.3	4.3	4.9	81.8	84.7	83.1	12.8	11.0	12.0
4	5.7	4.0	4.9	80.9	85.5	83.0	13.4	10.5	12.1
5	5.4	3.8	4.6	86.1	89.5	87.6	8.5	6.7	7.7
1-5	6.3	5.0	5.7	80.7	84.0	82.2	13.0	11.0	12.1
6	7.7	4.0	6.1	76.2	83.9	79.6	16.1	12.1	14.4
7	6.6	4.0	5.4	82.9	88.0	85.2	10.5	8.0	9.4
8	6.9	4.2	5.7	82.4	89.5	85.6	10.7	6.3	8.7
6-8	7.1	4.1	5.7	80.2	86.9	83.2	12.7	9.0	11.1
9	9.1	5.7	7.7	69.3	81.1	74.1	21.6	13.3	18.2
10	8.6	7.0	7.9	79.1	85.0	81.6	12.4	7.9	10.5
11	10.4	11.8	11.0	86.3	85.8	86.1	3.3	2.4	2.9
9-11	9.3	7.8	8.6	76.7	83.6	79.6	14.0	8.6	11.8

3. Elementary level: Flow rates

Table 35. Elementary level: Flow rates by age and gender, 2009/10

Age	Dropout			Promotion			Repetition		
	M	F	T	M	F	T	M	F	T
5	19.4	13.0	16.4	61.8	67.9	64.6	18.8	19.1	19.0
6	8.0	6.3	7.2	76.0	80.6	78.2	15.9	13.1	14.6
7	6.8	5.4	6.2	79.0	82.0	80.4	14.2	12.7	13.5
8	6.1	4.9	5.5	80.0	83.7	81.7	13.9	11.4	12.7
9	5.7	4.3	5.1	81.3	85.1	83.1	13.0	10.6	11.9
10	5.7	4.6	5.2	82.5	85.5	83.9	11.7	9.9	10.9
11	5.4	4.1	4.9	83.4	86.3	84.7	11.2	9.5	10.5
12	6.7	5.6	6.2	81.3	84.0	82.5	12.0	10.4	11.3
13	8.9	7.2	8.3	78.9	81.3	79.8	12.2	11.5	11.9
14	6.0	5.6	5.9	90.0	88.9	89.7	4.0	5.6	4.4
15	25.0	50.0	35.7	75.0	33.3	57.1	0.0	16.7	7.1
16	0.0	0.0	0.0	100.0	100.0	100.0	0.0	0.0	0.0
17	0.0	0.0	0.0	0.0	100.0	100.0	0.0	0.0	0.0
Total	6.3	5.0	5.7	80.7	84.0	82.2	13.0	11.0	12.1

4. Middle level: Flow rates

Table 36. Middle level: Flow rates by age and gender, 2009/10

Age	Dropout			Promotion			Repetition		
	M	F	T	M	F	T	M	F	T
10	4.8	3.0	3.9	83.9	88.5	86.2	11.3	8.5	9.9
11	3.9	2.4	3.2	85.3	91.2	88.3	10.7	6.4	8.6
12	4.1	2.3	3.3	84.0	88.9	86.4	11.8	8.8	10.4
13	5.1	2.8	4.1	83.3	89.2	86.0	11.6	8.0	9.9
14	6.5	3.8	5.3	81.7	87.9	84.5	11.7	8.3	10.2
15	8.8	5.3	7.3	78.5	85.1	81.3	12.7	9.5	11.4
16	11.1	7.5	9.7	73.5	80.4	76.2	15.5	12.0	14.1
17	12.8	8.3	11.3	68.7	76.8	71.5	18.5	14.9	17.3
18	12.9	8.7	11.1	87.1	91.3	88.9	0.0	0.0	0.0
Total	7.3	4.2	5.9	79.1	86.4	82.3	13.6	9.4	11.8

5. Secondary level: Flow rates

Table 37. Secondary level: Flow rates by age and gender, 2009/10

Age	Grade 9-11								
	Dropout			Promotion			Repetition		
	M	F	T	M	F	T	M	F	T
12	0.0	0.0	0.0	93.8	100.0	96.3	6.3	0.0	3.7
13	1.7	1.4	1.6	87.3	94.2	90.6	10.9	4.3	7.8
14	5.0	2.8	3.9	83.2	91.2	87.1	11.8	6.0	9.0
15	6.1	4.7	5.5	80.2	89.1	84.3	13.7	6.1	10.2
16	7.8	5.8	6.9	78.7	85.2	81.6	13.6	9.0	11.5
17	9.6	8.6	9.2	75.4	81.3	77.9	14.9	10.2	12.9
18	11.4	10.6	11.1	72.7	78.6	74.9	15.9	10.8	13.9
19	12.4	12.0	12.3	74.0	79.5	76.0	13.6	8.5	11.8
20	2.7	5.4	4.1	70.3	89.2	79.7	27.0	5.4	16.2
Total	9.3	7.8	8.6	76.7	83.6	79.6	14.0	8.6	11.8

6. Elementary level: Zoba flow rates

Table 38. Elementary level: Average flow rates, 2009/10

		Grade 1-5			Grade 1			Grade 2			Grade 3			Grade 4			Grade 5		
		M	F	T	M	F	T	M	F	T	M	F	T	M	F	T	M	F	T
Eritrea	Drout	6.3	5.0	5.7	8.9	7.2	8.2	5.7	4.7	5.2	5.3	4.3	4.9	5.7	4.0	4.9	5.4	3.8	4.6
	Prom	80.7	84.0	82.2	78.1	80.9	79.4	77.7	80.8	79.1	81.8	84.7	83.1	80.9	85.5	83.0	86.1	89.5	87.6
	Repet	13.0	11.0	12.1	13.0	11.8	12.4	16.7	14.5	15.7	12.8	11.0	12.0	13.4	10.5	12.1	8.5	6.7	7.7
Anseba	Drout	5.2	4.0	4.6	7.4	6.3	6.9	4.5	3.7	4.2	4.2	3.2	3.8	4.7	3.0	4.0	4.5	3.0	3.8
	Prom	78.9	83.0	80.7	77.7	81.7	79.5	74.9	78.9	76.7	80.5	84.7	82.4	77.3	83.1	79.8	85.0	88.0	86.3
	Repet	16.0	13.0	14.6	15.0	12.0	13.6	20.6	17.3	19.1	15.3	12.2	13.9	17.9	13.9	16.2	10.6	9.0	9.9
Debub	Drout	6.4	4.7	5.7	8.3	6.4	7.5	5.8	4.9	5.4	5.2	4.1	4.7	6.3	4.0	5.2	6.1	3.9	5.1
	Prom	82.7	86.7	84.5	80.0	83.4	81.5	80.2	84.2	82.0	83.8	87.3	85.3	83.9	88.3	85.9	86.2	90.5	88.2
	Repet	10.9	8.6	9.8	11.7	10.2	11.0	14.0	10.9	12.6	11.0	8.6	9.9	9.8	7.7	8.9	7.6	5.5	6.7
DKB	Drout	6.0	6.0	6.0	9.1	10.6	9.7	4.0	2.6	3.5	4.3	5.7	4.7	6.1	4.5	5.5	5.2	2.8	4.4
	Prom	79.0	73.4	77.1	74.0	65.6	70.7	79.0	70.8	76.1	84.0	80.4	82.9	78.3	76.0	77.5	83.2	86.6	84.3
	Repet	15.0	20.6	16.9	16.9	23.8	19.6	17.0	26.6	20.4	11.7	13.9	12.4	15.6	19.4	16.9	11.6	10.6	11.3
Gash-Barka	Drout	11.6	9.7	10.8	15.4	12.7	14.2	11.0	9.3	10.2	10.1	9.0	9.6	10.3	8.0	9.3	9.4	7.7	8.7
	Prom	72.7	74.0	73.3	70.1	72.4	71.2	69.4	70.5	69.9	74.1	73.0	73.6	73.1	76.0	74.4	78.9	80.8	79.7
	Repet	15.7	16.3	16.0	14.4	14.9	14.6	19.6	20.2	19.9	15.8	18.0	16.8	16.6	16.0	16.3	11.8	11.5	11.6
Maekel	Drout	1.9	1.5	1.7	2.6	2.3	2.4	1.8	1.2	1.5	1.5	1.1	1.3	1.6	1.3	1.5	1.8	1.4	1.7
	Prom	88.0	92.0	89.9	86.9	90.2	88.5	85.2	89.6	87.3	88.9	93.6	91.1	87.1	92.7	89.8	92.2	94.7	93.4
	Repet	10.1	6.5	8.4	10.5	7.5	9.1	13.0	9.1	11.2	9.5	5.3	7.6	11.2	6.0	8.7	5.9	3.8	4.9
SKB	Drout	6.6	5.6	6.2	10.8	8.7	9.9	5.1	4.6	4.9	6.1	4.6	5.5	4.8	4.4	4.6	4.3	3.7	4.1
	Prom	77.7	78.3	78.0	74.6	74.2	74.4	73.4	73.4	73.4	76.7	78.8	77.6	78.5	80.1	79.1	87.4	89.3	88.2
	Repet	15.7	16.1	15.9	14.6	17.1	15.7	21.5	21.9	21.7	17.2	16.6	17.0	16.7	15.5	16.2	8.3	6.9	7.7

7. Middle level: Zoba flow rates

Table 39. Middle level: Average flow rates, 2009/10

		Grade 6-8			Grade 6			Grade 7			Grade 8		
		M	F	T	M	F	T	M	F	T	M	F	T
Eritrea	Drou	7.1	4.1	5.7	7.7	4.0	6.1	6.6	4.0	5.4	6.9	4.2	5.7
	Prom	80.2	86.9	83.2	76.2	83.9	79.6	82.9	88.0	85.2	82.4	89.5	85.6
	Repet	12.7	9.0	11.1	16.1	12.1	14.4	10.5	8.0	9.4	10.7	6.3	8.7
Anseba	Drou	7.0	3.8	5.6	7.5	3.7	5.8	6.3	3.8	5.2	7.0	3.9	5.6
	Prom	77.0	84.9	80.5	70.3	79.6	74.3	83.9	89.8	86.4	78.9	86.8	82.4
	Repet	16.0	11.3	14.0	22.3	16.7	19.9	9.8	6.4	8.3	14.1	9.4	12.0
Debub	Drou	8.3	4.8	6.7	8.2	4.5	6.5	8.2	4.6	6.6	8.6	5.4	7.1
	Prom	81.6	88.0	84.5	79.1	85.9	82.2	83.1	89.1	85.8	83.0	89.3	85.8
	Repet	10.1	7.2	8.8	12.7	9.6	11.3	8.7	6.3	7.6	8.5	5.3	7.0
DKB	Drou	10.9	7.3	9.5	13.3	7.5	10.9	8.3	7.1	7.9	10.4	7.3	9.2
	Prom	70.3	74.9	72.1	65.1	70.4	67.3	75.3	75.6	75.4	71.9	81.0	75.4
	Repet	18.8	17.8	18.4	21.6	22.1	21.8	16.4	17.3	16.7	17.7	11.7	15.4
Gash-Barka	Drou	0.0	0.0	0.0	0.0	0.0	0.0	0.0	0.0	0.0	0.0	0.0	0.0
	Prom	86.4	92.4	89.3	82.7	91.1	86.7	87.4	91.8	89.5	89.7	94.2	92.0
	Repet	10.1	5.6	7.9	13.8	6.8	10.5	8.8	6.2	7.5	7.2	3.8	5.4
Maekel	Drou	5.8	4.0	5.2	7.0	3.9	5.9	5.0	4.0	4.6	4.7	4.2	4.6
	Prom	78.6	80.5	79.2	75.8	78.3	76.7	80.8	82.2	81.3	80.2	82.2	80.9
	Repet	15.7	15.5	15.6	17.1	17.8	17.4	14.2	13.7	14.0	15.0	13.6	14.6
SKB	Drou	7.1	4.1	5.7	7.7	4.0	6.1	6.6	4.0	5.4	6.9	4.2	5.7
	Prom	80.2	86.9	83.2	76.2	83.9	79.6	82.9	88.0	85.2	82.4	89.5	85.6
	Repet	12.7	9.0	11.1	16.1	12.1	14.4	10.5	8.0	9.4	10.7	6.3	8.7

8. Secondary level: Zoba flow rates

Table 40. Secondary level: Average flow rates, 2009/10

		Grade 9-12			Grade 9			Grade 10			Grade 11		
		M	F	T	M	F	T	M	F	T	M	F	T
Eritrea	Drou	9.3	7.8	8.6	9.1	5.7	7.7	8.6	7.0	7.9	10.4	11.8	11.0
	Prom	76.7	83.6	79.6	69.3	81.1	74.1	79.1	85.0	81.6	86.3	85.8	86.1
	Repet	14.0	8.6	11.8	21.6	13.3	18.2	12.4	7.9	10.5	3.3	2.4	2.9
Anseba	Drou	6.1	6.9	6.4	6.1	5.4	5.8	5.6	5.0	5.4	6.8	11.4	8.6
	Prom	78.6	83.6	80.5	71.3	81.2	75.3	77.5	84.2	80.0	89.9	86.4	88.5
	Repet	15.3	9.5	13.0	22.6	13.5	18.9	16.9	10.8	14.6	3.3	2.2	2.9
Debub	Drou	12.5	10.9	11.9	12.6	7.3	10.6	11.6	9.1	10.6	13.8	19.1	16.0
	Prom	74.4	80.9	77.0	68.5	81.9	73.6	75.4	81.3	77.7	84.1	78.6	81.7
	Repet	13.0	8.2	11.1	18.9	10.8	15.8	13.0	9.6	11.7	2.1	2.3	2.2
DKB	Drou	12.8	10.9	12.2	12.2	8.3	11.0	10.0	10.1	10.0	18.6	16.7	18.0
	Prom	72.2	79.8	74.6	67.2	78.1	70.4	75.8	81.4	77.6	76.7	80.4	78.0
	Repet	14.9	9.3	13.1	20.7	13.7	18.6	14.2	8.5	12.3	4.7	2.9	4.1
Gash-Barka	Drou	0.0	0.1	0.1	0.0	0.0	0.0	0.1	0.1	0.1	0.1	0.1	0.1
	Prom	80.7	86.2	83.4	70.7	80.8	75.6	85.5	88.8	87.1	91.3	91.1	91.2
	Repet	14.3	8.7	11.5	24.4	15.0	19.8	9.5	6.1	7.8	3.6	2.3	2.9
Maekel	Drou	11.0	6.7	9.7	10.0	5.1	8.5	8.4	6.5	7.8	15.1	10.2	13.8
	Prom	74.9	85.3	77.9	67.8	82.1	72.2	81.3	89.5	83.7	80.3	87.0	82.1
	Repet	14.1	8.0	12.3	22.1	12.8	19.3	10.3	4.0	8.5	4.6	2.8	4.1
SKB	Drou	9.3	7.8	8.6	9.1	5.7	7.7	8.6	7.0	7.9	10.4	11.8	11.0
	Prom	76.7	83.6	79.6	69.3	81.1	74.1	79.1	85.0	81.6	86.3	85.8	86.1
	Repet	14.0	8.6	11.8	21.6	13.3	18.2	12.4	7.9	10.5	3.3	2.4	2.9

9. Elementary level: Cohort Reconstruction

Figure 1-7 are constructed based on the actual flow rates of the 2009/10 academic year indicated in table 38.

Figure 1: Elementary level: hypothetical cohort reconstruction (Constant) ERITREA

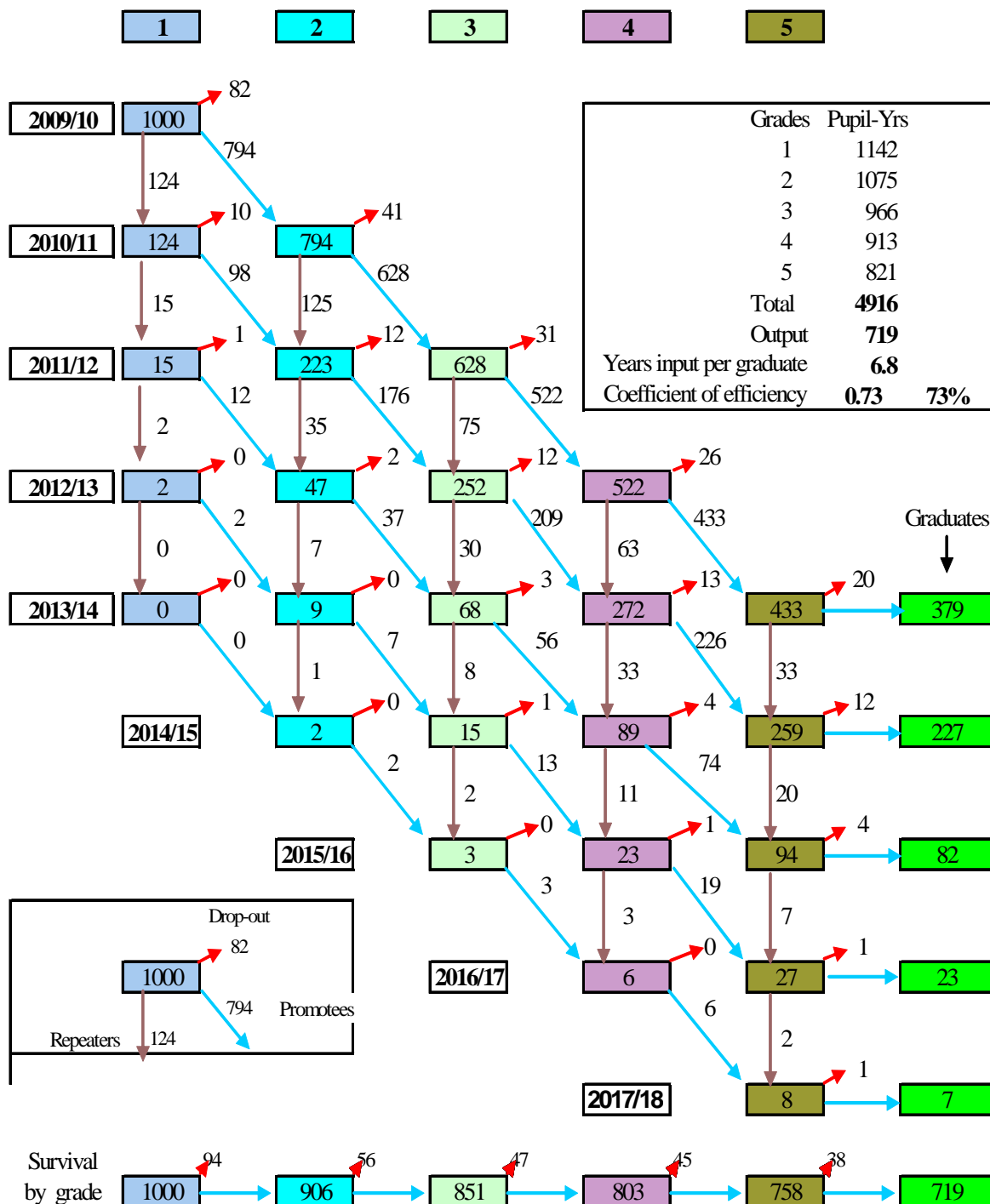


Table 41. Eritrea elementary level: Wastage, survival and transition rates by zoba

(Based on the 2009/10 flow rate and cohort reconstruction of each zoba)

	Internal efficiency ratios	Total	ANS	DEB	DKB	GASH	MAKL	SKB
1	Elementary level: Wastage ratio	1.37	1.36	1.34	1.45	1.75	1.15	1.44
2	Survival ratio for Grade 2	90.6	92.0	91.6	87.9	83.4	97.4	88.3
	Survival ratio for Grade 3	85.1	87.2	85.9	84.1	72.8	95.7	82.7
	Survival ratio for Grade 4	80.3	83.4	81.4	79.6	64.4	94.4	77.3
	Survival ratio for Grade 5	75.8	79.4	76.8	74.3	57.3	92.8	73.0
3	Transition ratio from elementary level to middle level (No national exam.)	71.9	76.0	72.5	70.3	51.5	91.1	69.7
4	Proportion of total waste spent due to dropouts	54.4	45.3	60.0	46.8	62.6	35.8	47.7
5	Proportion of total waste spent due to repetition	45.6	54.7	40.0	53.2	37.4	64.2	52.3
6	Average length of study per graduate	5.7	5.8	5.5	6.0	5.9	5.5	5.9

Chart 13. Elementary level Average length of study per student (ALSS) by zoba

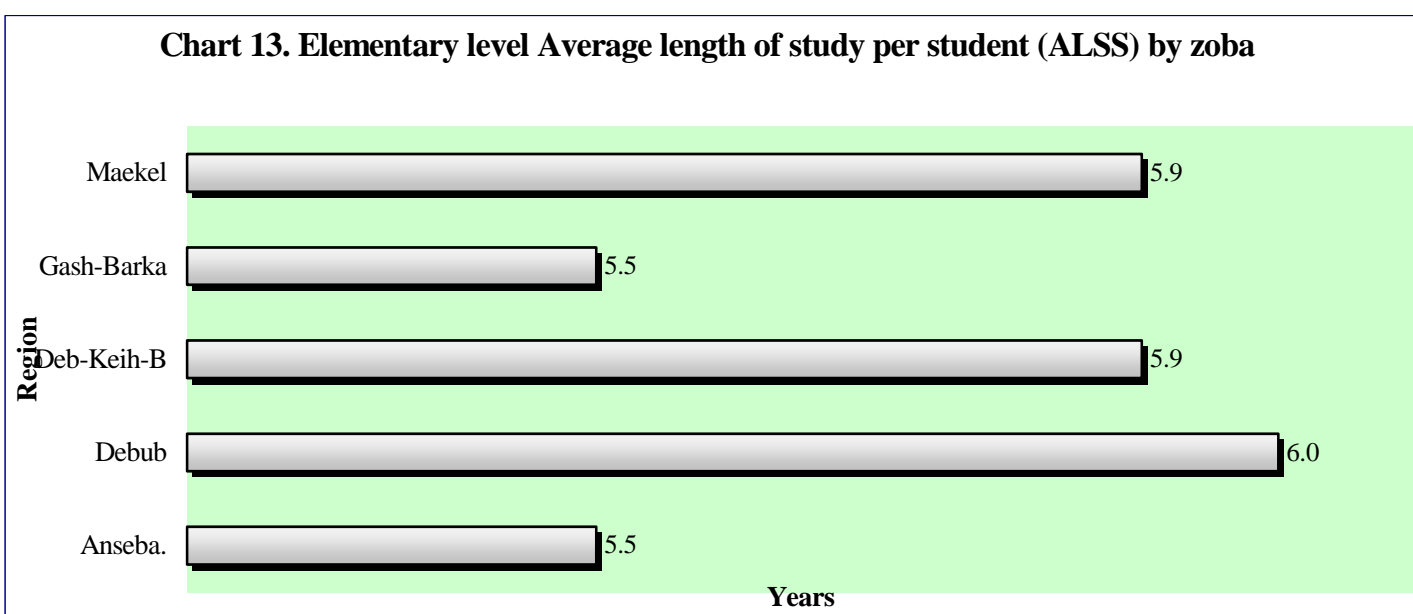
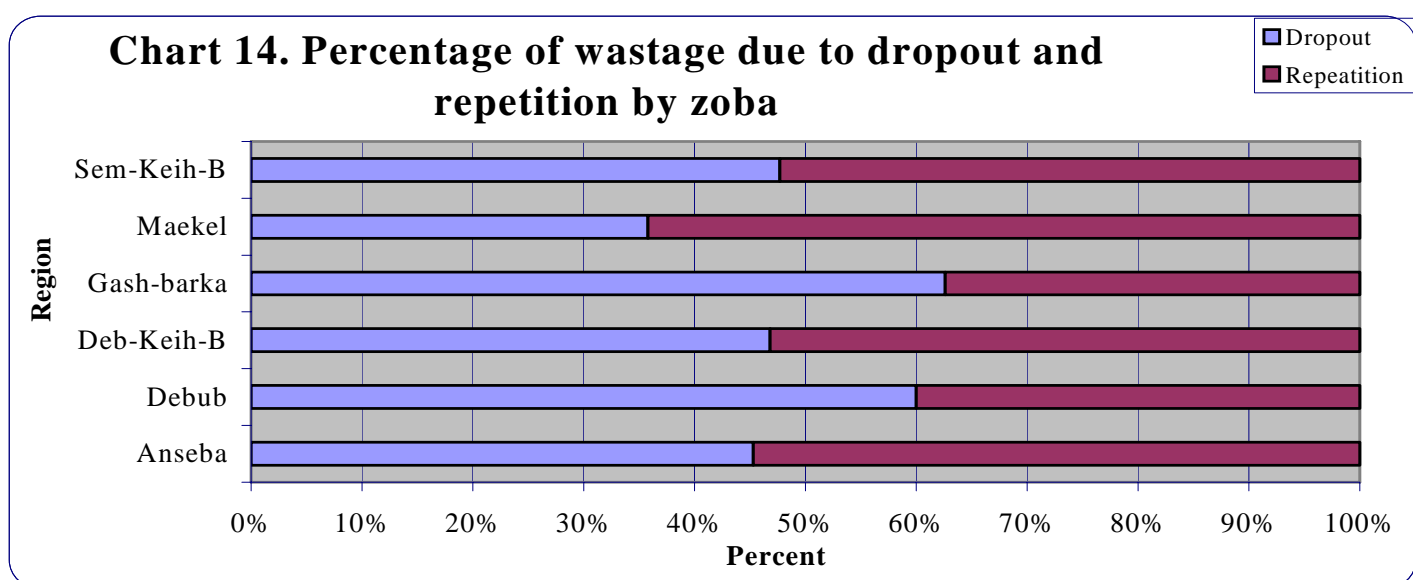


Chart 14. Percentage of wastage due to dropout and repetition by zoba



IX. Teaching staff: Elementary, middle and secondary level

Table 42. Teachers: Gender and level by zoba, 2009/10

Zoba	1-5			6-8			9-12			Total		
	T	M	F	T	M	F	T	M	F	T	M	F
Anseba	1,204	792	412	498	455	43	267	236	31	1,969	1483	486
Debub	2,258	1,242	1,016	1,203	1,055	148	641	566	75	4,102	2,863	1,239
Deb-Keih-B	176	157	19	70	69	1	40	40	0	286	266	20
Gash-Barka	1,454	1,121	333	517	491	26	277	259	18	2,248	1,871	377
Maekel	1,801	639	1,162	1,111	855	256	789	613	176	3,701	2,107	1,594
Sawa	0	0	0	0	0	0	287	283	4	287	283	4
Sem-Keih-B	642	505	137	281	270	11	171	161	10	1,094	936	158
Total	7,535	4,456	3,079	3,680	3,195	485	2,472	2,158	314	13,687	9,809	3,878

1. Pupil/teacher ratio: Elementary, middle and secondary level

This ratio represents the average number of pupils per teacher at each level.

Table 43. Pupil /teacher ratio by year and level, 1991/92-2009/10

Year	Level								
	1-5			6-7			8-11		
	Pupil	Teacher	Pup/tea ratio	Pupil	Teacher	Pup/tea ratio	Pupil	Teacher	Pup/tea ratio
1991/92	150,982	3,647	41	27,917	783	36	27,627	758	36
1992/93	184,656	4,978	37	28,431	855	33	31,531	905	35
1993/94	208,199	5,272	39	32,781	978	34	32,756	1,015	32
1994/95	224,287	5,583	40	34,995	948	37	36,728	1,081	34
1995/96	241,725	5,828	41	39,751	992	40	39,188	1,039	38
1996/97	240,737	5,476	44	47,460	1,017	47	40,594	942	43
1997/98	247,499	5,799	43	57,152	1,162	49	41,615	959	43
1998/99	26,1963	5,576	47	67,021	1,208	56	47,533	982	49
1999/00	29,5941	6,229	48	74,317	1,312	57	57,334	1,047	55
2000/01	298,691	6,668	45	76,564	1,377	56	63,951	1,188	54
2001/02	330,278	7,498	44	80,882	1,529	53	70,183	1,419	50
2002/03	359,423	7,692	47	87,019	1,614	54	72,818	1,277	57
	1-5			6-8			9-12		
2003/04	374,997	8,033	47	122,966	2,241	55	69,401	1,645	43
2004/05	377,512	7,942	48	139,029	2,449	57	76,051	1,607	47
2005/06	364,263	7,711	47	148,082	2,491	59	77,644	1,552	50
2006/07	331,855	6,936	48	141,081	2,478	57	75,800	1,778	43
2007/08	314,034	7,311	43	144,031	2,704	53	83,411	1,811	46
2008/09	300,129	7,802	39	151,131	3,352	45	89,761	2,292	40
2009/10	286,021	7,535	38	151,702	3,680	41	95,076	2,472	38

2. Teachers' qualifications

Teachers in the elementary level are considered professionally qualified if they are graduates of the TTI or have an equivalent / higher qualification.

Teachers in the middle level are considered professionally qualified if they have a qualification of higher education diploma (12+2) or have an equivalent or higher qualification.

Teachers in the secondary level are considered professionally qualified if they have a minimum qualification of Bachelor degree.

Table 44. Teachers: Qualifications and level by year, 1991/92-2009/10

Year	Level									
	1-5			6-7			8-11			
	Total	qualified	Percent	Total	Qualified	Percent	Total	Qualified	Percent	
1991/92	N.A	N.A	N.A	N.A	N.A	N.A	N.A	N.A	N.A	
1992/93	4,978	2,128	42.7	855	484	56.6	905	431	47.6	
1993/94	5,272	2,062	39.1	978	710	72.6	1,015	479	47.2	
1994/95	5,583	2,675	47.9	948	661	69.7	1,081	507	46.9	
1995/96	5,828	4,218	72.4	992	490	49.4	1,039	540	52.0	
1996/97	5,476	3,747	68.4	1,017	446	43.9	942	527	55.9	
1997/98	5,799	3,915	67.5	1,162	500	43.0	959	682	71.1	
1998/99	5,576	4,058	72.8	1,208	459	37.9	982	715	72.8	
1999/00	6,229	4,472	71.8	1,312	420	32.0	1,047	729	69.6	
2000/01	6,668	4,699	70.5	1,377	486	35.3	1,188	869	73.1	
2001/02	7,498	5,456	72.8	1,529	471	30.8	1,419	1,032	72.7	
2002/03	7,692	6,194	80.5	1,614	507	31.4	1,277	870	68.1	
		1-5			6-8			9-12		
2003/04	8,033	6,675	83.1	2,241	633	28.2	1,645	1,294	78.6	
2004/05	7,942	6,640	83.6	2,449	708	28.9	1,607	1,311	81.6	
2005/06	7,711	6,749	87.5	2,491	709	28.5	1,552	1,276	82.2	
2006/07	6,936	6,039	87.1	2,478	911	36.8	1,778	1,524	85.7	
2007/08	7,311	6,594	90.2	2,704	1,137	42.0	1,811	1,453	80.2	
2008/09	7,802	7,197	92.2	3,352	1,825	54.5	2,292	1,794	78.3	
2009/10	7,535	7,069	93.8	3,680	2,229	60.6	2,472	1,981	80.1	

3. Female teachers**Table 45. Percentage of female teachers by level and year, 1991/92-2009/10**

Year	1-5			6-7			8-11			
	T	F	% of F	T	F	% of F	T	F	% of F	
1991/92	3,647	1,411	38.7	783	139	17.8	758	67	8.8	
1992/93	4,978	1,849	37.1	855	143	16.7	905	93	10.3	
1993/94	5,272	1,865	35.4	978	140	14.3	1,015	104	10.2	
1994/95	5,583	1,974	35.4	948	139	14.7	1,081	108	10.0	
1995/96	5,828	2,025	34.7	992	156	15.7	1,039	103	9.9	
1996/97	5,476	1,977	36.1	1,017	170	16.7	942	106	11.3	
1997/98	5,799	1,893	32.6	1,162	170	14.6	959	113	11.8	
1998/99	5,576	1,951	35.0	1,208	149	12.3	982	112	11.4	
1999/00	6,229	2,330	37.4	1,312	167	12.7	1,047	109	10.4	
2000/01	6,668	2,710	40.6	1,377	160	11.6	1,188	115	9.7	
2001/02	7,498	2,873	38.3	1,529	177	11.6	1,419	145	10.2	
2002/03	7,692	2,754	35.8	1,614	178	11.0	1,277	140	11.0	
		1-5			6-8			9-12		
2003/04	8,033	2,887	35.9	2,241	216	9.6	1,645	215	13.1	
2004/05	7,942	3,166	39.9	2,449	245	10.0	1,607	215	13.4	
2005/06	7,711	3,350	43.4	2,491	314	12.6	1,552	204	13.1	
2006/07	6,936	3,307	47.7	2,478	245	10.0	1,778	208	11.7	
2007/08	7,311	3,241	44.3	2,704	258	10.5	1,811	210	11.6	
2008/09	7,802	3,144	40.3	3,352	331	9.9	2,292	267	11.7	
2009/10	7,535	3,079	40.9	3,680	485	13.2	2,472	314	12.7	

N.B. In secondary schools the pedagogic head, unit leader, and director are included as teachers.

In 2006/07 and the following edition in tables 40 and 43 teacher at elementary level was mistakenly reported as 6,933 (T) and 3,305 (F) instead it should be read as 6,936 (T) and 3,307(F) respectively. Similarly on 2006/07 edition in Maekel region total female teacher in Middle and Secondary teachers was reported as 921(F) and 211(F) respectively it should be read as 140 (F) and 208 (F) respectively.

X. Age-specific enrolment, 2009/10

Table 46. Age-specific enrolment, 2009/10

Age	School Age population		Pre-primary		Elementary		Middle		Secondary		Enrolment %	
	T	F	T	F	T	F	T	F	T	F	T	F
0	153355	76431										
1	147817	74164										
2	141364	71218										
3	124651	62460	572	282							0.46	0.45
4	111005	55223	12,539	6,031							11.30	10.92
5	100416	49524	21,450	10,285	306	129					21.67	21.03
6	92755	45321	5,713	2,807	26,162	12,548					34.36	33.88
5-6	193,171	94,845	27,163	13,092	26,468	12,677					27.76	27.17
7	87455	42329	221	112	44,710	20,842					51.38	49.50
8	83829	40197	11	8	45,470	21,172					54.25	52.69
9	83304	39709			44,201	20,449					53.06	51.50
10	86428	41188			43,525	19,797	623	327			51.08	48.86
11	91851	43927			36,686	16,404	8,576	4,363			49.28	47.28
7-11	432,867	207,350	232	120	214,592	98,664	9,199	4,690	0		51.75	49.90
12	97923	47000			24,600	10,449	23,941	11,520	27	13	49.60	46.77
13	105192	50670			19,868	7,310	33,295	15,489	475	237	50.99	45.46
14	109380	52930			329	93	33,958	15,160	4,100	2,025	35.10	32.64
12-14	312,495	150,600	0		44,797	17,852	91,194	42,169	4,602	2,275	44.99	41.37
15	108259	52714			101	17	25,189	10,585	11,806	5,500	34.27	30.55
16	103604	50832			45	6	15,243	5,969	17,248	7,642	31.40	26.79
17	99542	49264			13	2	10,748	3,495	17,702	7,469	28.59	22.26
18	95380	47729			5		117	20	17,016	6,748	17.97	14.18
15-18	406,785	200,539			164	25	51,297	20,069	63,772	27,359	28.33	23.66
19	90797	45721					9	1	26,337	9,564		
20	86090	43225							306	88		
21	81250	40412							43	16		
22	76124	37513							9	4		
23	70916	34526							2			
24	65631	31804										
25	60301	29558										
26	55153	27712					3	1				
27	50101	25838							5			
28	44844	23853										
29	41565	22745										
30	41241	22908										
	2,787,523	1,378,645	40,506	19,525	286,021	129,218	151,702	66,930	95,076	39,306		