



UNFCCC Country Brief 2014: Eritrea

A. Key Country Indicators

	Global Rank	Global share	
CO2 emissions from fuel combustion ¹ (2012)	135	0.00%	0.5 Mt CO2 Eq.
Population ² (2013)	107	0.09%	6.33 Million
CO2 emissions / Pop. ¹ (2012)	138		0.09 tCO2 per capita
GDP Size ² (2013)	156	0.01%	Based on PPP
GDP Size ² (2013)	159	0.00%	Based on exchange rates
UNDP human development index ³ (2012)	181		
GDP Structure ² , % (2013)	Agriculture: 15, Industry: 22, Services: 63		
Share of GDP ² , % (2013)	Imports: 23, Exports: 14		

B. CO2 Emissions and Related Indicators

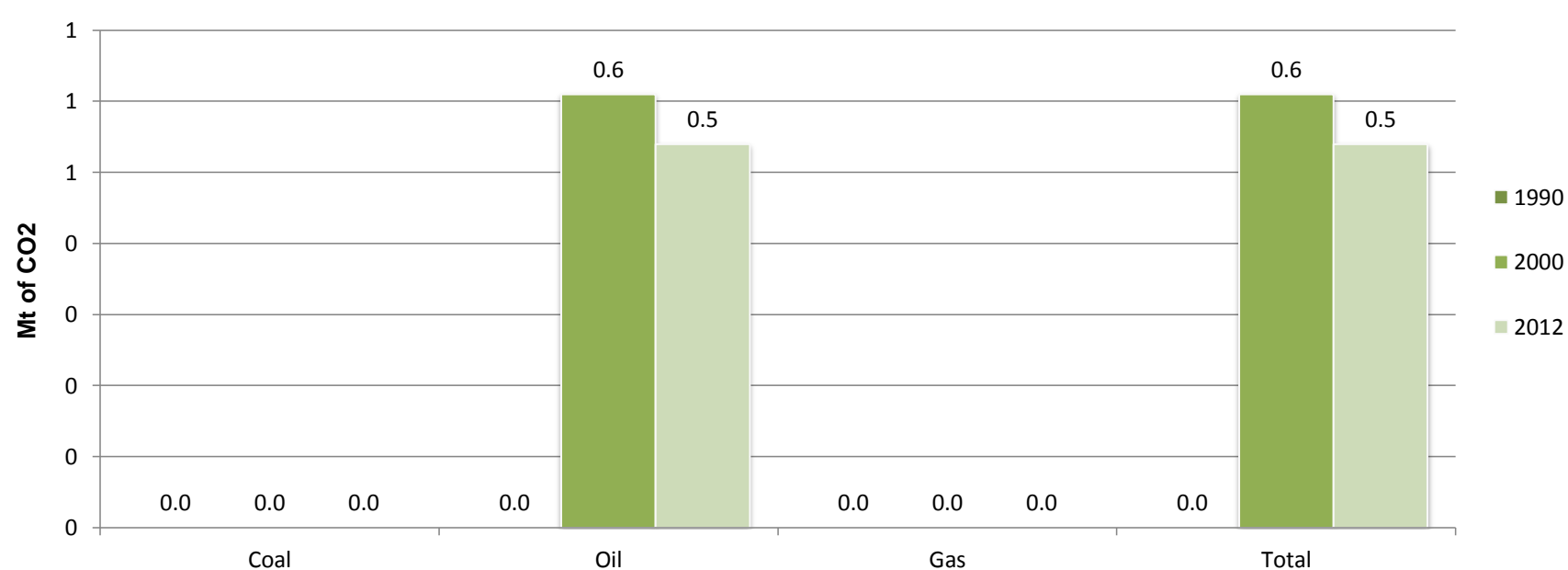
	Trend 1990-2012	1990	2000	2005	2010	2012	Change (%) 1990-2012	Growth rate (% per year) 1990-2012
Population ²		3,272,563	3,939,348	4,854,066	5,741,159	6,130,922	87.3	2.9
GDP (billions 2005 USD PPP) ²		-	5.08	5.76	5.54	6.45	-	-
TPES (Mtoe) ¹		-	0.71	0.76	0.74	0.80	-	-
CO2 emissions from fuel combustion (Mt) ¹		-	0.61	0.58	0.48	0.54	-	-
GHG emissions (Mt CO2 eq.) ⁴		3.13	4.71	4.42	4.57	-	-	-
GDP / Pop.(2005 USD PPP per capita)		-	1,290	1,187	965	1,052	-	-
TPES / Pop. (toe per capita)		-	0.18	0.16	0.13	0.13	-	-
CO2 fuel comb. / Pop. (t CO2 per capita)		-	0.15	0.12	0.08	0.09	-	-
CO2 fuel comb. / GDP (kg CO2 / 2005 USD PPP)		-	0.12	0.10	0.09	0.08	-	-

C. Energy Profile¹

	Trend 1990-2012	1990	2000	2005	2010	2012	Change (%) 1990-2012	Ratio of imports/exports to production (%) 1990	2012
Energy production		-	0.51	0.50	0.58	0.62	-	-	-
Energy imports		-	0.21	0.23	0.16	0.18	-	-	28.6
Energy exports		-	-	-	-	-	-	-	0.0

	Trend 1990-2012	1990	2000	2005	2010	2012	Change (%) 1990-2012	Share of TPES (%) 1990	2012
Oil		-	0.20	0.26	0.16	0.18	-	-	22.1
Oil Shale		-	0.00	0.00	0.00	0.00	-	-	0.0
Coal		-	0.00	0.00	0.00	0.00	-	-	0.0
Peat		-	0.00	0.00	0.00	0.00	-	-	0.0
Gas		-	0.00	0.00	0.00	0.00	-	-	0.0
Hydro energy		-	0.00	0.00	0.00	0.00	-	-	0.0
Nuclear energy		-	0.00	0.00	0.00	0.00	-	-	0.0
Combust. renewables & waste		-	0.51	0.50	0.58	0.62	-	-	77.9
Wind/Solar/Geothermal		-	0.00	0.00	0.00	0.00	-	-	0.0
Other (electricity trade)		-	0.00	0.00	0.00	0.00	-	-	0.0
TPES		-	0.71	0.76	0.74	0.80	-	-	100.0

D. CO2 Emissions by Fuel Type¹



^[1] Source : International Energy Agency (IEA)

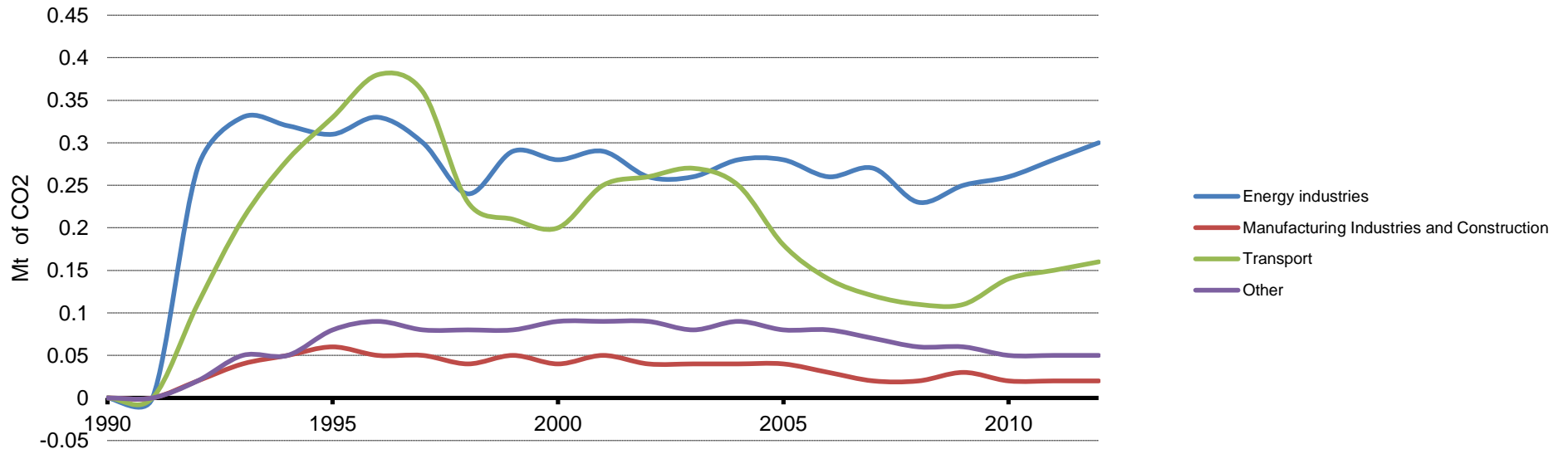
^[2] Source : World Bank, World Development Indicators

^[3] Source : UNDP, Human Development Indicators

^[4] Source : Emissions Database for Global Atmospheric Research (EDGAR)



E. Trends in CO2 Emissions by Sector⁵

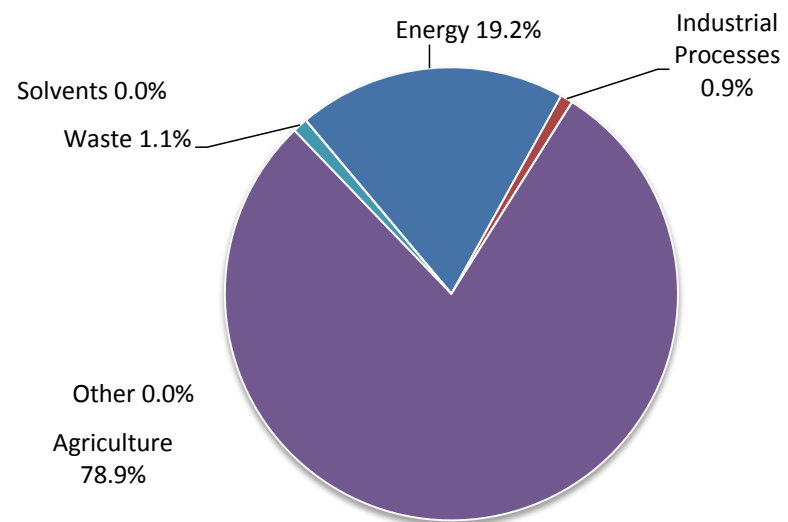


F. Emissions by sector⁶

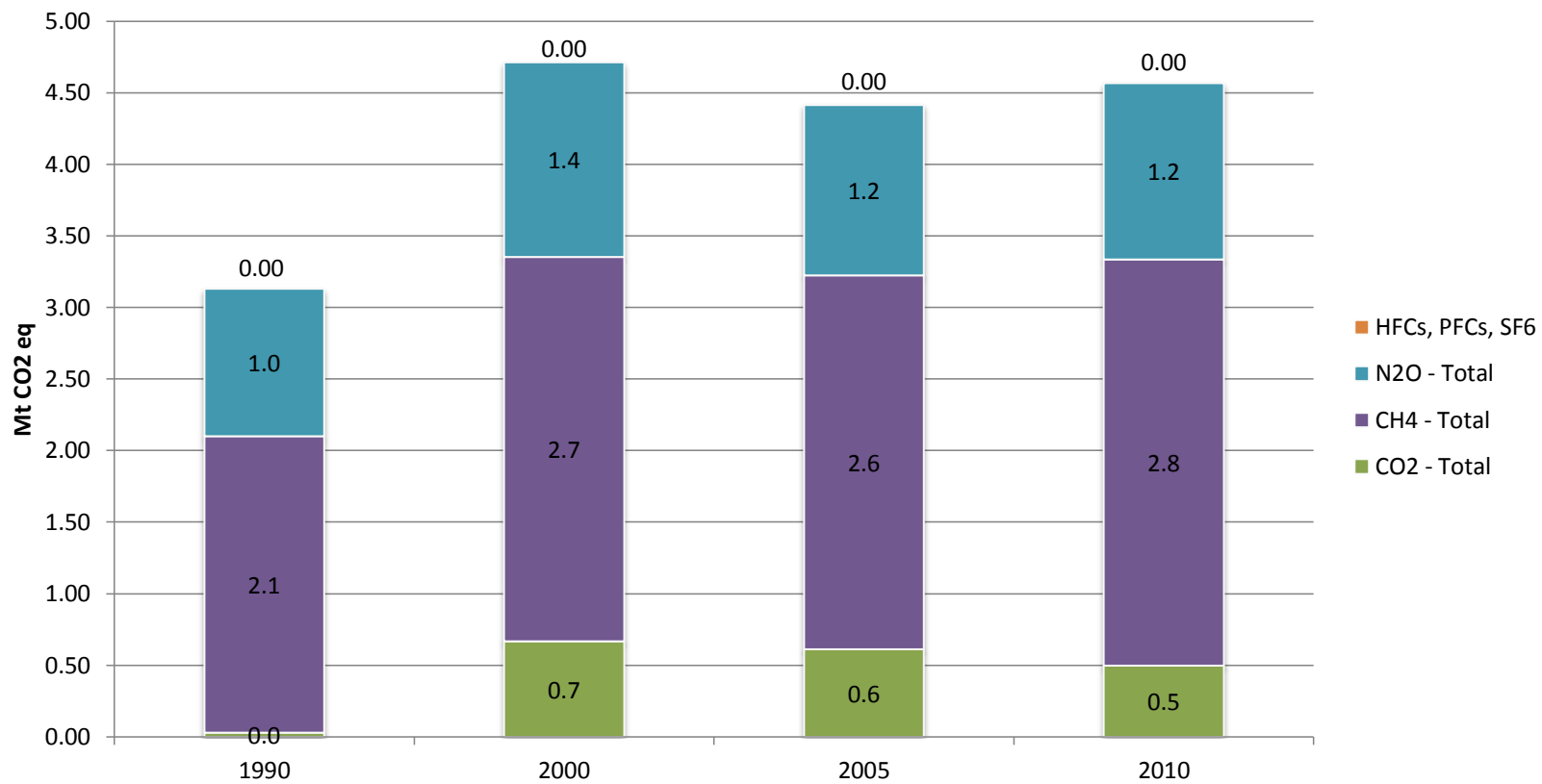
Latest year for which data (submitted to the UNFCCC as part of a National Communication or inventory submission) is available

2000

Category	GHG Emissions (kt CO2 eq.)
1. Energy	754.00
2. Industrial Processes	35.00
3. Solvents	-
4. Agriculture	3,103.00
5. LULUCF	-
5bis Land-Use Change and Forestry	8,289.00
6. Waste	42.00
7. Other	-
GHG Total with LULUCF	12,223.00
GHG Total without LULUCF	3,934.00



G. Emissions of CO2, CH4, N2O, HFCs, PFCs and SF6⁷



H. Further Information

[UNFCCC GHG Data Interface](#)
[Annual GHG Inventory Submissions](#)
[Submitted INDCs](#)
[Sixth National Communications](#)
[Submitted Biennial Reports](#)
[Focal Point and Ratification Status of the Convention and the Protocol](#)

[IEA Data Services](#)
[World Bank Data](#)
[UNDP Open Data](#)
[EDGAR](#)

^[5] Source : International Energy Agency (IEA)
^[6] Source : UNFCCC
^[7] Source : Emissions Database for Global Atmospheric Research (EDGAR)